



GB	User Manual
FR	Guide de l'utilisateur
DE	Bedienungsanleitung
IT	Manuale d'uso
NL	Gebruikershandleiding
PT	Manual de Instruções
ES	Guia del usuario
DK	Brugervejledning
NO	Bruksanvisning
SE	Instruktionsmanual
FI	Käyttöohje
GR	Οδηγίες Χρήσεως
RU	Руководство пользователя
PL	Instrukcja Obsługi
CZ	Návod k obsluze
SI	Navodila Za Uporabo
TR	Kullanım Kilavuzu

INSTRUCTIONS FOR SAFE USE



This appliance should only be used for domestic cleaning, as described in this user guide. Please ensure that this guide is fully understood before operating the appliance.

Always switch off and remove the charger from the socket before cleaning the appliance or any maintenance task.

This appliance can be used by children aged from 8 years and above and persons with reduced physical, sensory or mental capabilities or lack of experience and knowledge if they have been given supervision or instruction concerning use of the appliance in a safe way and understand the hazards involved. Children shall not play with the appliance. Cleaning and user maintenance shall not be made by children without supervision.

If the power cord is damaged stop using the appliance immediately. To avoid a safety hazard, an authorised Hoover service engineer must replace the power cord.

WARNING: For the purposes of recharging the battery, only use the detachable supply unit (Ref: GKYZD0100260UK for UK, GKYZD0100260EU for EU) provided with this appliance.

Only use the approved battery type (type ref.: HW3BAT) recommended by HOOVER. Failing to do so may cause the lithium-ion battery to become a potential hazard.

Check that your supply voltage is the same as that stated on the charger. This appliance is supplied with a double insulated battery charger which is only suitable for insertion in a 230V (UK 240V) socket outlet.

Plug the charger in to suitable socket outlet and connect the charger jack plug to the appliance.

When charging the appliance, the power switch lever must be in the off position.

Re-connect the appliance to the charger after use to recharge the battery.

Never charge the batteries in temperatures above 35°C or below 7°C. It is normal for the charger to become warm to the touch when charging.

Unplug the charger in the event of prolonged absence (holidays, etc.). Recharge appliance again before use as batteries may self discharge over increased periods of storage.

Use only attachments, consumables or spares recommended or supplied by Hoover.

Use only the floor cleaning solution recommended by Hoover, and

quantity as stated in the manual.

Keep hands, feet, loose clothing and hair away from rotating brushes of product and any hand-held accessories with rotating parts.

Do not unplug the charger by pulling on the power cord.

Do not pull or carry by cord, use cord as a handle, close a door on cord, or pull cord around sharp edges or corners.

Do not run over the power cord when using your appliance. Keep cord away from heated surfaces.

Do not pick up hard or sharp objects, matches, hot ashes, cigarette ends or other similar items.

Do not spray with or pick up flammable liquids, combustible liquids, drain cleaner, aerosols, toxic liquids or their vapours to clean a floor, such as gasoline, or use in areas they may be present.

Do not clean over floor electrical outlets.

Do not continue to use your appliance or charger if it appears faulty.

Do not use the appliance to clean animals or people.

Do not replace the batteries with non-rechargeable batteries.

Hoover service: To ensure the continued safe and efficient operation of this appliance we recommend that any servicing or repairs are only carried out by an authorised Hoover service engineer.

Leaks from battery cells can occur under extreme usage or temperature conditions. If the liquid gets on skin, wash quickly with water. If the liquid gets into the eyes, flush them immediately with clean water for a minimum of 10 minutes. Seek medical attention.

Use extra care when cleaning on stairs. Do not place cleaner on stairs.

Keep detergents and other cleaners out of children's reach.

This product is only used on indoor surfaces. It is forbidden to install, charge and use this product outdoors, in bathrooms and around swimming pools.

For use on bare floors or sealed wood floors. NOT for use on carpets.

Do not immerse product. Do not use without installing the rolling brush, clean-water tank, dirty-water tank and filter element.

Store in a dry place. Do not expose machine to freezing temperatures.

End of product Life disposal

If the appliance is to be disposed of the batteries must first be removed.

The appliance must be disconnected from the supply mains when removing the battery. Dispose of the batteries safely. Run the appliance until it stops because the batteries are fully discharged. Used batteries should be taken to a recycling station and not disposed of with household waste. To remove the batteries, please contact the Hoover Customer Centre or proceed according to the following instructions.

IMPORTANT: Always fully discharge the batteries before removal.

Run the cleaner until the batteries are completely empty.
Remove the charger jack plug from the appliance.

Note: Should you experience any difficulty in dismantling the unit or for more detailed information on treatment, recovery and recycling of this appliance, please contact your local city office or your household waste disposal service.

 : detachable supply unit

The Environment:

The symbol on this appliance indicates that this appliance may not be treated as household waste. Instead it must be handed over to the applicable collection point for the recycling of electrical and electronic equipment. Disposal must be carried out in accordance with local environmental regulations for waste disposal. For more detailed information about treatment, recovery and recycling of this appliance, please contact your local city office, your household and waste disposal service or the shop where you purchased the appliance.



This product complies with the European Directives 2014/35/EU, 2014/30/EU and 2011/65/EU.

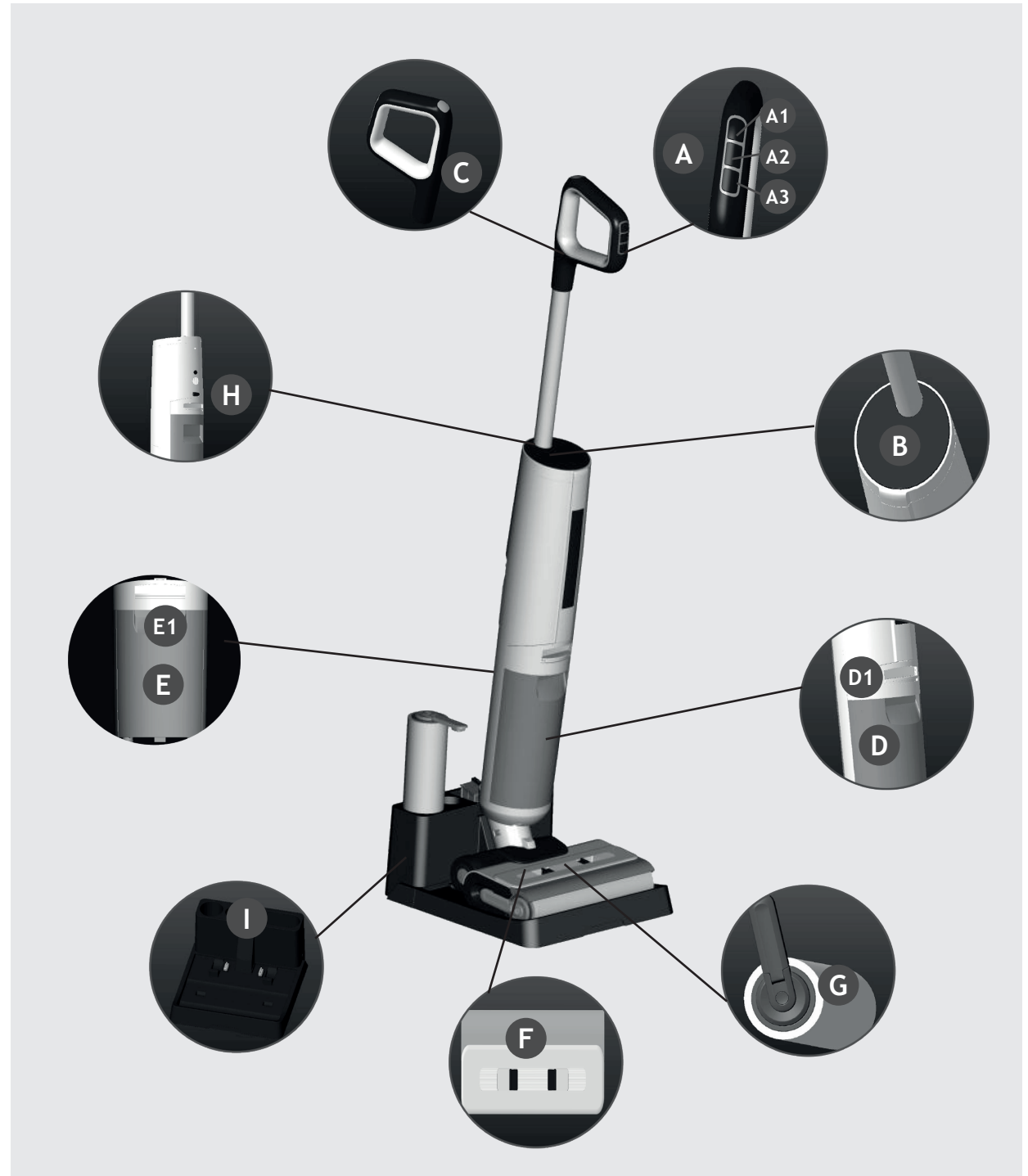
CANDY HOOVER GROUP S.r.l. Via Comolli 16, 20861 Brugherio (MB) Italy

1. GETTING TO KNOW YOUR CLEANER

MAIN COMPONENTS:

- A. ON/OFF BUTTONS
 - A1. MODE BUTTON
 - A2. ON/OFF BUTTON
 - A3. ON/OFF TURBO BUTTON (MAX)
- B. DISPLAY
- C. AUTO-CLEAN BUTTON
- D. CLEAN WATER TANK
 - D1. CLEAN WATER TANK RELEASE BUTTON
- E. DIRTY WATER TANK
 - E1. DIRTY WATER TANK RELEASE BUTTON
- F. ROLLER MOP COVER
- G. FRONT ROLLER
- H. VOICE PROMPT BUTTON
- I. DOCKING STATION

*Docking station has multiple uses:
charging base, place to store your cleaner
and drip tray to catch any residual water
when the machine is not in use.
HW3: additional feature air cold ventilation.
HW3 PLUS: additional feature drying function.



2. PREPARING YOUR CLEANER

IMPORTANT: Accessories included are dependant on your model. Full specification details for your product are included in your product packaging.

Remove all product parts from the packaging and assemble your cleaner.

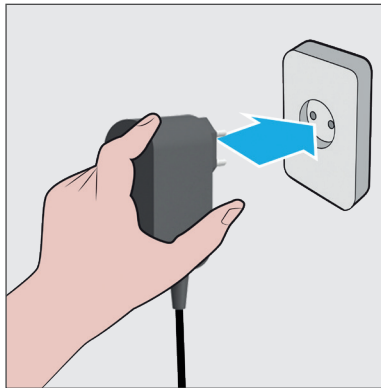
STEP 1:

Fit the wand into the main unit.



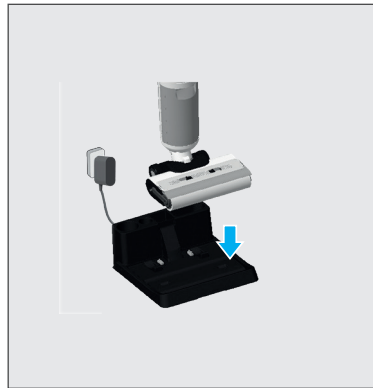
STEP 2:

Plug the power cord of the docking station into the socket.



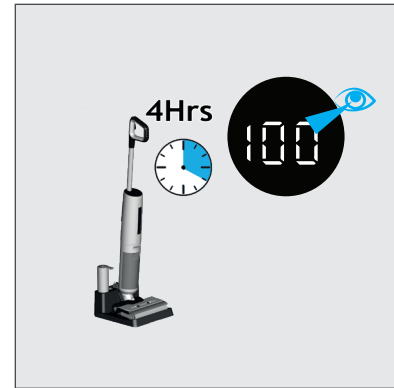
STEP 3:

Put the main product unit onto the docking station.



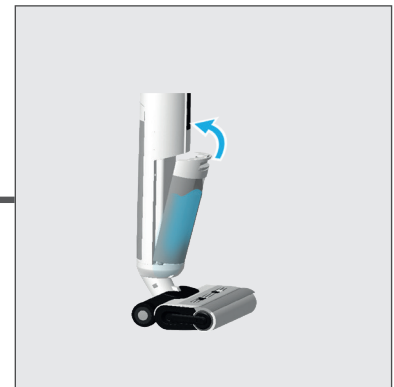
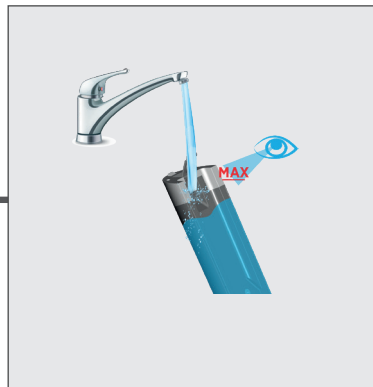
STEP 4:

Charge the cleaner for 4 Hrs.



STEP 5:

Fill the clean water tank to the MAX line.



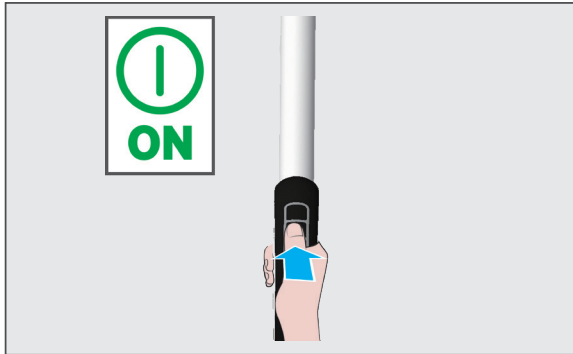
3. USING YOUR CLEANER

3.1 MODE BUTTON/VOICE PROMPT

To use your product:

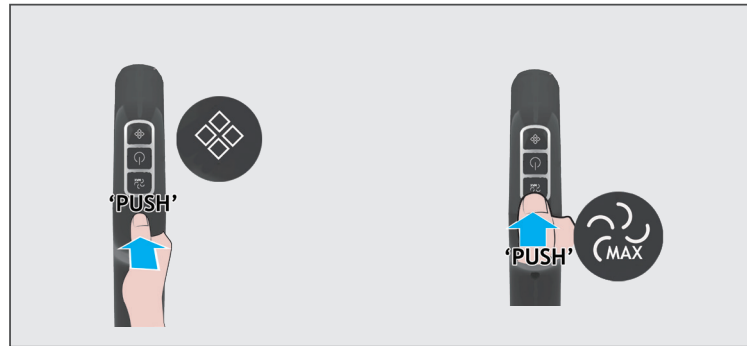
STEP 1:

Once the product is fully charged, press the **ON/OFF** button to operate your cleaner:
The cleaner will start by default in Vacuum and Wash mode.
The voice prompt is on and the language is English.



STEP 2:

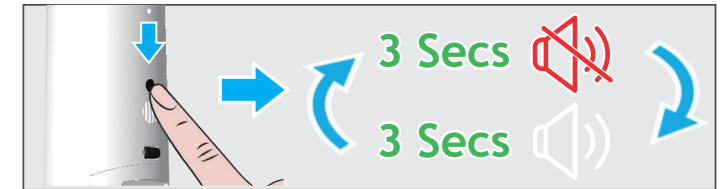
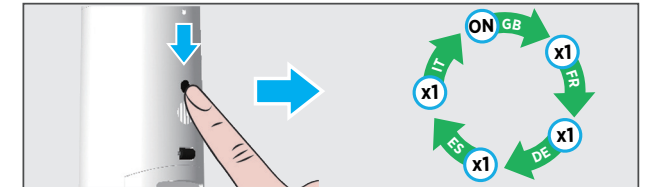
Press the **MODE** button to change the mode:
Mode 1: Vacuum and wash mode for deep cleaning of dirt, debris, wet spills and stubborn stains.
Mode 2: Vacuum only mode for dust and debris pick up.
Turbo button (MAX mode): Use this button to increase suction both in vacuum and wash mode and vacuum only mode.



STEP 3:

VOICE PROMPT BUTTON:

Short press: to switch between languages (GB/FR/DE/ES/IT).
Long press (3 seconds): to turn on/off the voice prompt.



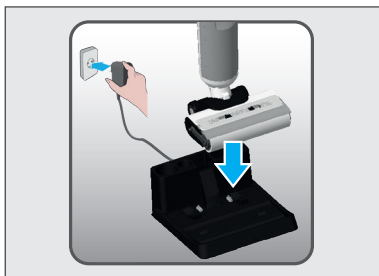
3. USING YOUR CLEANER

3.2 AUTO-CLEAN

IMPORTANT: We recommend performing the auto-clean after each cleaning session to ensure optimum performance.

STEP 1:

Put your product onto the docking station. Please ensure the dirty water tank is empty before starting the auto-clean.



STEP 2:

Fill the clean water tank to the MAX line.



STEP 3:

Press the auto-clean button.



STEP 4:

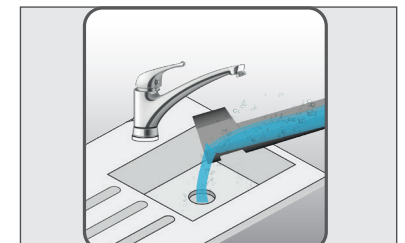
The auto-clean process takes about 180s to complete.



STEP 5:

Once the auto-clean process is completed, empty the dirty water tank to get ready for another cleaning session.

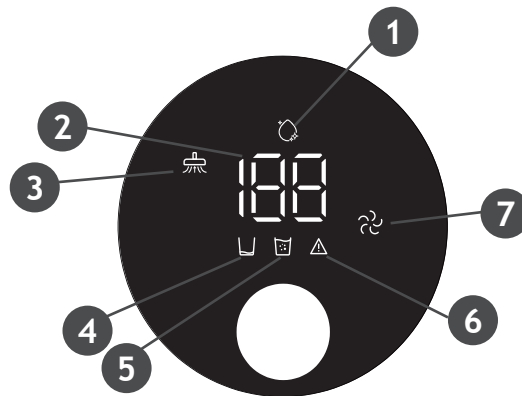
For dirty water tank maintenance, please refer to "4.1 DIRTY WATER TANK" section.



3. USING YOUR CLEANER

3.3 DISPLAY STATUS

1. AUTO-CLEAN
2. BATTERY STATUS
3. VACUUM ONLY MODE
4. CLEAN WATER TANK IS EMPTY
5. DIRTY WATER TANK IS FULL
6. ROLLER STALL
7. MAX MODE



AUTO CLEAN STATUS: this icon turns on when the auto-clean is in process.

BATTERY STATUS: this icon shows the remaining battery percentage.

DIRTY WATER TANK IS FULL: this icon turns on when the dirty water tank is full.

CLEAN WATER TANK IS EMPTY: this icon turns on when the clean water tank is empty.

POWER BAR: this icon indicates the power consumption status.

ROLLER STALL: this icon turns on when a roller brush blockage is occurred.

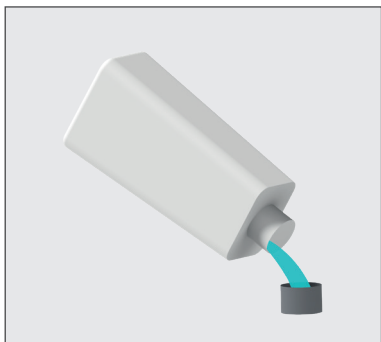
3. USING YOUR CLEANER

3.4 USE HOOVER FLOOR CLEANING SOLUTION

How to use Hoover floor cleaning solution:

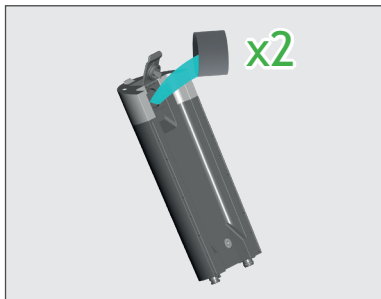
STEP 1:

Pour the cleaning solution into the bottle cap.



STEP 2:

Pour 2 caps into the clean water tank. (Recommended mix rate: water:clean solution=40:1).



STEP 3:

Fill the clean water tank to the MAX line to start cleaning.



Note: Use only the floor cleaning solution recommended by Hoover, and quantity as stated in the manual.

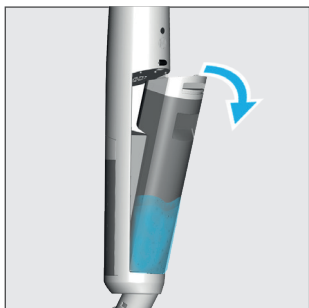
4. CLEANER MAINTENANCE

4.1 DIRTY WATER TANK

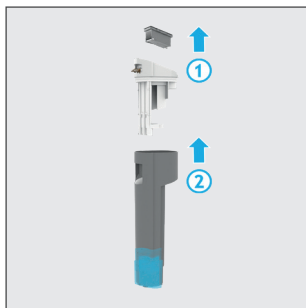
IMPORTANT: Before performing any maintenance task, always ensure your product is switched off.

Empty the dirty water tank and clean the hose

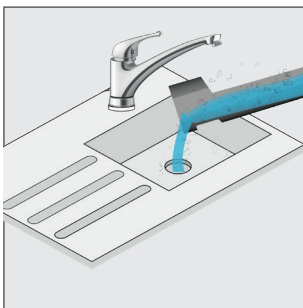
STEP 1: Remove the dirty water tank.



STEP 2: Take off the filter and debris collector.



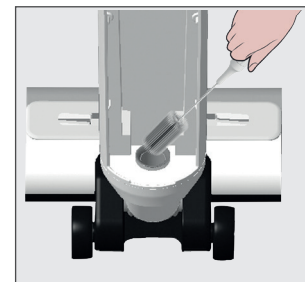
STEP 3: Empty the dirty water.



STEP 4: Remove any dry particles and excess debris from the filter and debris collector using the cleaning tool.



STEP 5: Use the cleaning tool to remove any excess dirt from the hose.



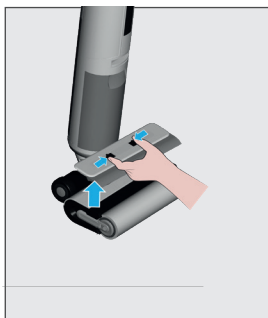
To refit the dirty water tank to your cleaner, follow the above instructions in reverse.

4. CLEANER MAINTENANCE

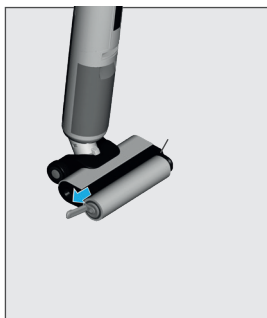
4.2 MOP ROLLER STALL

Clean the mop roller

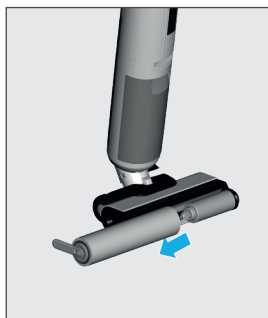
STEP 1: Press the release buttons to take off the roller mop cover.



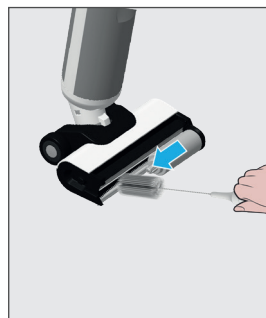
STEP 2: Pull the mop roller hook.



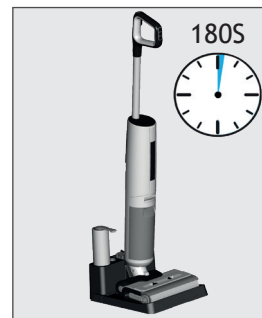
STEP 3: Take off the mop roller.



STEP 4: Use the cleaning tool to deep clean the nozzle.



STEP 5: Auto-clean. See section 3.2



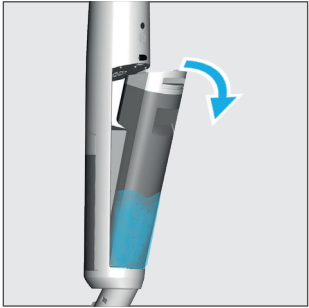
To refit the rollers, follow the above instructions in reverse.

4. CLEANER MAINTENANCE

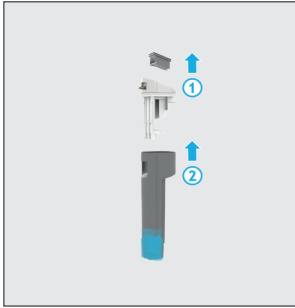
4.3 FILTER

Clean the filter

STEP 1: Remove the dirty water tank.



STEP 2: Take off the filter and debris collector.



STEP 3: Clean the filter using lukewarm water.



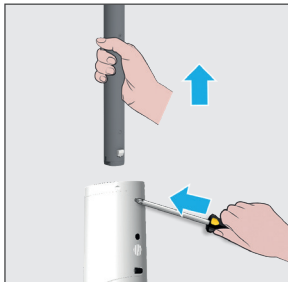
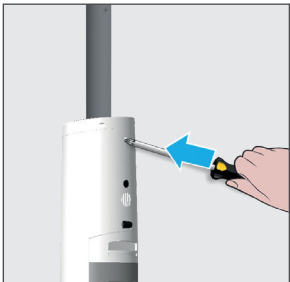
STEP 4: Leave the filter to air dry for 24Hrs before re-fitting.



5. DISASSEMBLE YOUR CLEANER

Remove the wand

To release the wand, press the spring with a narrow tool (like a screwdriver) while pulling the wand.



7. TROUBLESHOOTING

The following is a list of commonly encountered problems and solutions.

Common failure	Possible reason	Solution
Main unit does not work	Handle not installed in place	Please reinstall to ensure that it is in place before use
	The main unit has no power or insufficient power	Please fully charge the main unit before use
	The roller or roller cover are not installed in place/the roller is entangled with hair and stops rotating	Reinstall or clean the roller
	Dirty water tank is full	Empty the dirty water tank before use
Machine suction is weakened	Filter blockage	Please clean the filter element
	Roller cover, filter and clean water tank are not installed in place	Confirm whether they are installed in place before use
	The roller is entangled with hair	Clean the roller before use
	Excess dirt or blockage in the pipeline	Please clean the pipeline
There is abnormal noise in motor operation	Excessive dirty water in the dirty water tank	Clean the dirty water tank before use
	The suction port is blocked	Clean the obstacles in the suction port
When charging, the screen power prompt icon is not displayed	The power adapter is not connected to a power socket	Check whether the power adapter is plugged in
	The connection between the power adapter and the docking station is not in place	Check whether it is in good connection
	The docking between the main unit and the charging base is not in place	Please confirm that the main unit is placed correctly
No water from the main unit	Clean water tank is not installed in place/Clean water tank is short of water	Reinstall or add water to the clean water tank
Water leakage from air outlet	The filter is not dried after cleaning	After cleaning, make sure to dry it before use
Auto-clean does not work	The roller may get stuck by large particles	Open the roller cover for inspection and cleaning
	The machine is not charging	Ensure that the main unit starts the auto-clean function again when it is charging
	The power of the machine is less than 10% and cannot start auto-clean	When the cleaner is charging, start the auto-clean function when the power is greater than 10%
	Dirty water tank is not installed in place/Dirty water tank is full of water	Reinstall or empty of the dirty water tank

If there is any doubt call the Hoover Service Office for advice. They may be able to assist you over the telephone. A service charge will be made if the cleaner is examined and found to be in working order, has not been assembled in accordance with these instructions or has been used incorrectly.

8. IMPORTANT INFORMATION

Hoover Spares and Consumables

Always replace parts with genuine Hoover spares. These are available from your local Hoover dealer or direct from Hoover. When ordering parts always quote your model number.

Quality

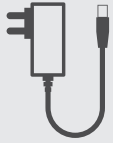
Hoover's factories have been independently assessed for quality. Our products are made using a quality system which meets the requirements of ISO 9001.

Your Guarantee

The guarantee conditions for this appliance are as defined by our representative in the country in which it is sold. Details regarding these conditions can be obtained from the dealer from whom the appliance was purchased. The bill of sale or receipt must be produced when making any claim under the terms of this guarantee.

Subject to change without notice.

EC 2019/1782

	Manufacturer Name	Ningbo Jiuchang Electrical Equipment Co.,LTD.
	Manufacturer Address	South of Jiangjiadu,Lizhou street,Yuyao zhejiang
	Battery	21.6v(LI-ION)4000mAH
	Motor	MAX150W(BLDC)
	Charge time	4 hours
	Working time	Auto 35 min,Turbo 20 min
	Vacuum	16 kpa
	Noise	78 dbA