

# Haier

# **INSTRUCTION MANUAL FOR WINE COOLER**

MODEL NO.  
**JG45B**

**Thanks for buying our wine cooler, Hope our advanced product will give your wine a different joyful taste. Before use, please read and follow all safety rules and operating instructions.**

## WARNING!

- To prevent damaging the door gasket, make sure to have the door all the way opened when pulling shelves out of the rail compartment.
- The appliance must be positioned so that the plug is accessible. Release the electric cord. Move your cabinet to its final location. Do not move your Cabinet while loaded with wine. You might distort the body. The wine cellar should be installed in a suitable place in order to avoid Touching the compressor with the hand.  
Children should be supervised to ensure that they do not play with the appliance.
- If the supply cord is damaged, it must be replaced by manufacturer of its Service agent or a similarly qualified person in order to avoid a hazard.

This appliance can be used by children aged from 8 years and above and persons with reduced physical, sensory or mental capabilities or lack of experience and knowledge if they have been given supervision or not play with the appliance. Cleaning and user maintenance shall not be made by children without supervision.

Children aged from 3 to 8 years are not allowed to load and unload wine cooler.

To avoid contamination of wine, please respect the following instructions:

- Opening the door for long periods can cause a significant increase of the temperature in the compartments of the appliance.
- Clean regularly surfaces that can come in contact with bottles and accessible drainage systems.
- Clean water tanks if they have not been used for 48 h; flush the water system connected to a water supply if water has not been drawn for 5 days.
- If the refrigerating appliance is left empty for long periods, switch off, defrost, clean, dry, and leave the door open to prevent mould developing within the appliance.

– **WARNING:** Keep ventilation openings, in the appliance enclosure or in the built-in structure, clear of obstruction.

– **WARNING:** Do not use mechanical devices or other means to accelerate the defrosting process, other than those recommended by the manufacturer.

– **WARNING:** Do not damage the refrigerant circuit.

– **WARNING:** Do not use electrical appliances inside the food storage compartments of the appliance, unless they are of the type recommended by the manufacturer.

Do not store explosive substances such as aerosol cans with a flammable propellant in this appliance.


This appliance is intended to be used in household and similar applications such as

- staff kitchen areas in shops, offices and other working environments;
- farm houses and by clients in hotels, motels and other residential type environments;
- bed and breakfast type environments;
- catering and similar non-retail applications.

– **WARNING:** To avoid a hazard due to instability of the appliance, it must be fixed in accordance with the instructions.

**PLEASE DON'T TRY TO PLUG INTO OR EXTENSION THE CABLE IN ANY CASE.**

## IMPORTANT SAFETY INSTRUCTIONS

<b>⚡WARNING⚡</b>	To reduce the risk of fire, electrical shock, or injury when using your appliance, follow these basic precautions:
<ul style="list-style-type: none"><li>• Read all instructions before using the Wine cooler.</li><li>• <b>DANGER or WARNING:</b> Risk of child entrapment. Child entrapment and suffocation are not problems of the past. Junked or abandoned appliances are still dangerous . . . even if they will “just sit in the garage a few days”.</li><li>• <b>Before you throw away your old Wine cooler:</b> Take off the door. Leave the shelves in place so that children may not easily climb inside.</li><li>• Never allow children to operate, play with, or crawl inside the appliance.</li><li>• Never clean appliance parts with flammable fluids. The fumes can create a fire hazard or explosion.</li><li>• Do not store or use gasoline or any other flammable vapors and liquids in the vicinity of this or any other appliance. The fumes can create a fire hazard or explosion.</li><li>• <b>If the refrigerant of these appliances are R600a , Flammable and explosive articles should not be put in or near the cabinet, to avoid the fire or explode caused.</b></li></ul> <div data-bbox="539 1016 995 1415"></div> <p data-bbox="213 1541 549 1576"><b>-Save these instructions-</b></p>	

## INSTALLATION INSTRUCTIONS

### ➤ **Before Using Your Wine cooler**

- Remove the exterior and interior packing.
- Before connecting the Wine cooler to the power source, let it stand upright for approximately 2 hours. This will reduce the possibility of a malfunction in the cooling system from handling during transportation.
- Clean the interior surface with lukewarm water using a soft cloth.
- When disposing your appliance, please choose an authorized disposal site.

### ➤ **Installation of Your Wine Cooler**

- This appliance is designed to be for free standing installation or built-in (fully recessed) (Refer to sticker location the back of this appliance).
- **This appliance is intended to be used exclusively for the storage of wine or beverages.**
- Place your Wine cooler on a floor that is strong enough to support it when it is fully loaded. To level your Wine cooler, adjust the front leveling leg at the bottom of the Wine cooler.
- This appliance is using flammability refrigerant. So never damage the cooling pipework during the transportation. Locate the Wine cooler away from direct sunlight and sources of heat (stove, heater, radiator, etc.). Direct sunlight may affect the acrylic coating and heat sources may increase electrical consumption. Extreme cold ambient temperatures may also cause the unit not to perform properly.
- Avoid locating the unit in moist areas.
- Plug the Wine cooler into an exclusive, properly installed-grounded wall outlet. Do not under any circumstances cut or remove the third (ground) prong from the power cord. Any questions concerning power and/or grounding should be directed toward a certified electrician or an authorized Products service center.

### ➤ **Attention**

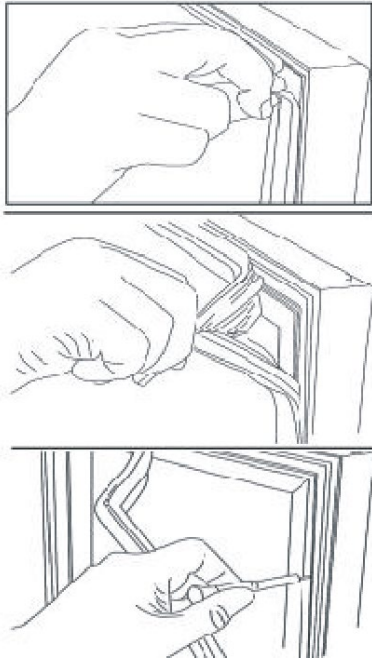
- Store wine in sealed bottles;
- Do not overload the cabinet;
- Do not open the door unless necessary;
- Do not cover shelves with aluminum foil or any other shelf material which may prevent air circulation;
- Should the Wine cooler be stored without use for long periods it is suggested, after a careful cleaning, to leave the door ajar to allow air to circulate inside the cabinet in order to avoid possible formations of condensation, mold or odors.

### ➤ **Ambient Room Temperature Limits**

This appliance is designed to operate in ambient temperatures specified by its temperature class marked on the rating plate.

Class	Symbol	Ambient Temperatures range
Extended Temperate	SN	+ 50°F to + 90°F(+ 10°C to + 32°C)
Temperate	N	+ 60°F to + 90°F(+ 16°C to + 32°C)
Subtropical	ST	+ 60°F to + 100°F(+ 16°C to + 38°C)
Tropical	T	+ 60°F to + 110°F(+ 16°C to + 43°C)

➤ **Installing the handle**



1. Open the door and carefully pull out the door gasket only at the area where the handle is to be installed.
2. You will be able to see two screws inside the door.
3. Insert the screw cover in the arrow direction (only for full glass door and slim stainless-steel door). see Fig 1
4. Drive the upper screw for 3 or 4 circles, and then drive the lower screw for 3 or 4 circles for align the handle
5. Alternatively tighten the upper and lower screw until the handle is flush against the door frame.
6. Carefully press the door gasket into its original position.

- ① Screw
- ② Screw covers (attached to manual bag)
- ③ Handle
- ④ Door

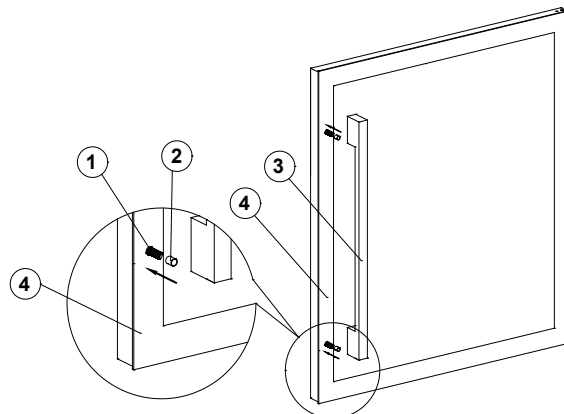


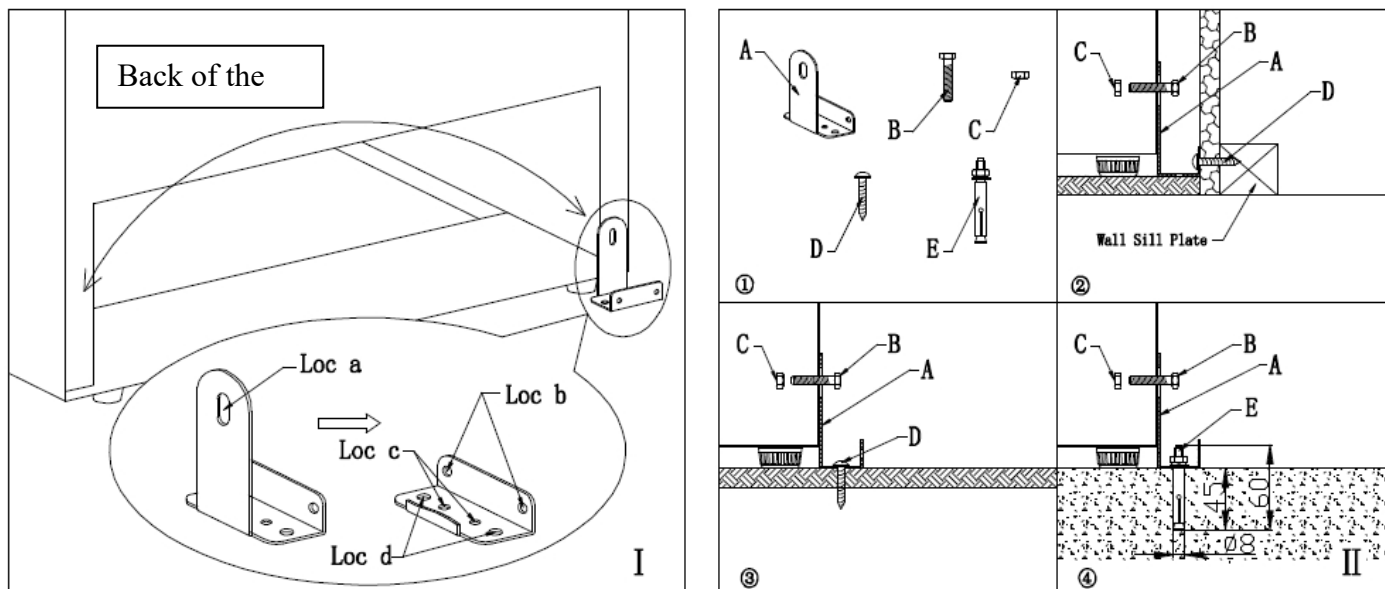
Fig 1

**CAUTION:**

Do not over-tighten the screws as this may cause damage to the handle or to the door.

## ➤ **ANTI-TIP BRACKET INSTALLATION INSTRUCTIONS**

**WARNING:** Please use the anti-tip bracket and following below instruction when FREE-STANDING to avoid the unit **TIPPING** cause dangerous!



### 1. **Anti-tip bracket parts list: (Fig II ①)**

- A: Anti-tip bracket (1pc)
  - B: Hexagon bolt (1pc)
  - C: Hexagon nut (1pc)
  - D: Self-tapping screw (2pcs)
  - E: Expansion screw (1 pc)
- Secure the bracket with the screws provided.

### 2. **Anti-tip bracket mounting hold instruction: (Fig I )**

- Loc A: Fixed mounting hole for unit
- Loc B: Fixed mounting holds for Real wall
- Loc C: Fixed mounting holds for Wood floor
- Loc D: Fixed mounting holds for Concrete floor

### 3. **Anti-tip bracket installation steps:**

The bracket can be installed at the left bottom OR right bottom of the back of the unit. You can choose which side is convenient for you.

**IMPORTANT:** Determine the final location of the range before attempting to install the bracket. You need to choose below installation method one of three ways.

#### **1 REAL WALL installation: (Fig II ②)**

After confirmed the install location, place the bracket on the floor with Loc B against the real wall, use D: Self-tapping screw (2pcs) align Loc B and secure the bracket into real wall.

Move the unit to align to the bracket Loc A, use B: Hexagon bolt (1pc) and C: Hexagon nut (1pc) to fix.

#### **NOTE:**

The screws **MUST** enter into a wood sill plate. If the wall contains any metal studs or similar materials, then the floor installation must be used

#### **2. WOOD FLOOR installation: (Fig II ③)**

After confirmed the install location, place the bracket on the wood floor, use D: Self-tapping screw

(2pcs) align Loc C and secure the bracket into wood floor.

Move the unit to the align to the bracket Loc A, used B: Hexagon bolt (1pc) and C: Hexagon nut (1pc) to fix.

### 3.CONCRETE FLOOR installation: (Fig II ④)

After confirm the installed location, choose any hold of Loc D to secure the bracket into the concrete floor

Using a concrete bit, drill  $\Phi 8\text{mm}$  pilot hold 45~55mm deep. Use E: Expansion screw (1 pc) enter into the concrete, take out the nut, spring washer and washer. Align Loc D to E:Expansion screw(1 pc) and put back the nut, spring washer and washer to fix on the concrete floor.

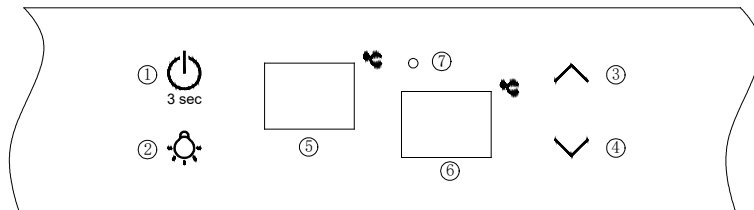
Move the unit to the align to the bracket Loc A, used B: Hexagon bolt (1pc) and C: Hexagon nut (1pc) to fix.


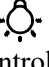
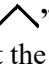
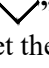
#### ATTENTION:

Check the bracket: After installing the bracket, please try to using appropriate intensity to tipping the unit. If the unit not tipping that means the bracket mounted securely, or MUST be reinstalled following these instruction.

## OPERATING YOUR WINE COOLER/BEVERAGE COOLER AND SETTING THE TEMPERATURE CONTROL


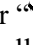
### ➤ Control System Instruction



- ① “ 3 sec ” **Button**  
To control this appliance turn on/off ( press and hold this buttons for approximately 3 seconds).
- ② “ ” **Button**  
To control the inner light turn on/off.
- ③ “ ” **Button**  
To set the temperature of the upper chamber.
- ④ “ ” **Button**  
To set the temperature of the lower chamber.
- ⑤ **LED display window**  
To set the temperature of the upper chamber.
- ⑥ **LED display window**  
To set the temperature of the lower chamber.
- ⑦ **indicator light**  
Compressor in operation display.



### ➤ Setting The Temperature Controls

- When pressing “” or “” button, the system will be entering the set up mode in the upper or lower compartment automatically. The LED will flashing and display the setting temperature.

Press once the button, the temperature will decrease or increase 1 °C. When exceeding the minimum value that can be established, it will jump to the highest adjustable temperature value automatically. After stopping pressing the button for 5 seconds, LED figure will stop flash, then revert back to display the temperature of the upper or lower compartment.

- After the unit is unplugged, the system will return to the acquiescence temperature, which is set by the factory. The acquiescence temperature is as below:  
Upper compartment: 6 °C  
Lower compartment: 12 °C
- If you want to display each actual indoor temperature, press the corresponding button " Set Upper " or " Set Lower ", and the LED will flash and display the current temperature. After you stop pressing the button for 5 seconds, the LED figure will stop flashing, then revert back to show the set temperature.

**Upper compartment:** The temperature setting can be adjusted from 5°C to 10°C.

**Lower compartment:** The temperature setting can be adjusted from 10°C to 18°C.

### ➤ Temperature Alarm

If the temperature inside is higher than 23 °C, it will display "HI" on the display panel, and after one hour after the alarm / buzzer will sound. This indicates that the temperature inside is too high. If the temperature inside is lower than 0 °C, it will display "LO" on the display panel and at the same time the alarm also malfunction indicator is active.

### ➤ Temperature Recollection Function

In the event of a power interruption, wine chiller can remember the previous temperature settings, and when the power is recovery, the cooler temperature will go back the same setting temperature as power off.

### ➤ Overtime Open the Door Alarm

When you forget close the door or the door is not closed completely, the buzzer alarm after 5 minutes. Please close the door completely and avoid the cold energy was lost.

### ➤ Internal light

In order to reduce energy consumption, the LED light within this wine cabinet will automatically switch off when closed the door. If you would prefer the LED light to remain on continuously, this is possible. Please press and hold the “LIGHT” button for 5 seconds, the display will show “LP”. After 4 seconds the display will revert back to normal and the light will remain on until manually switched off.

If you would like to revert back and conserve energy (recommended), press and hold the “LIGHT” button for 5 seconds, the display will show “LF”. After 4 seconds the display will revert back to normal the light will be on when door open and the light turn off when door closed.

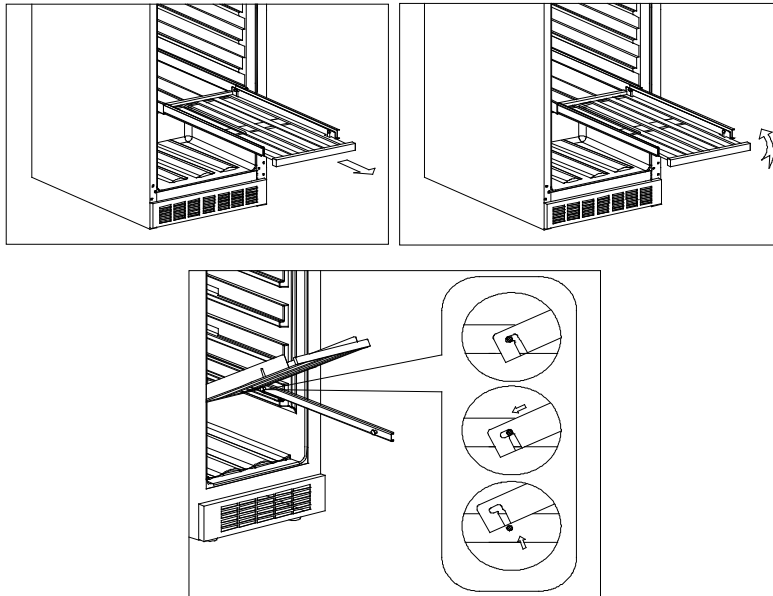
- Replaceable (LED only) light source by a professional.
- This product contains a light source of energy efficiency class G.

### ➤ **Shelves Instruction**

Do not cover shelves with aluminum foil or any other material as this will impede air flow inside the cabinet and can adversely affect the interior cabinet temperature.

To remove the shelves:

1. Fully extend the shelf.
2. Lift up the front of the shelf.
3. Holding the shelf track, push the shelf in and then up to release it from the rear dampers.



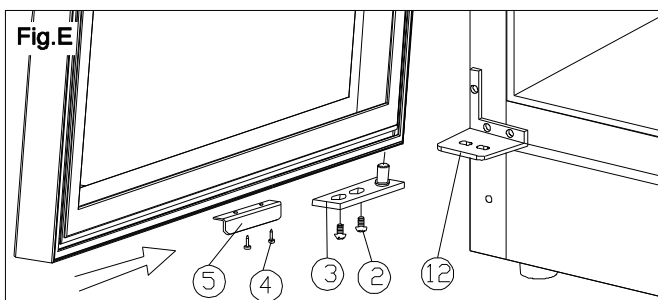
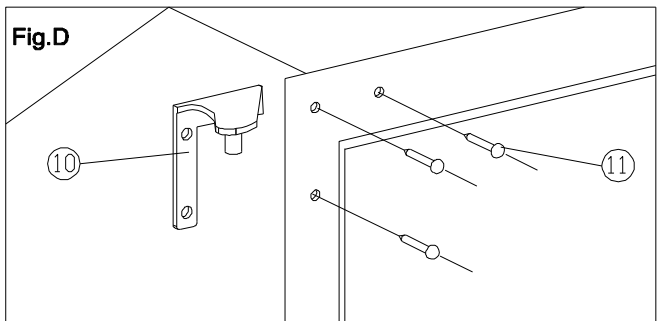
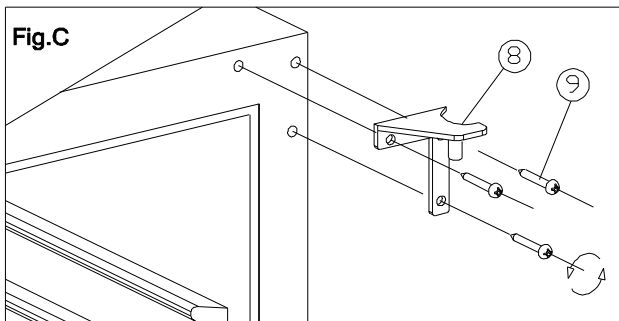
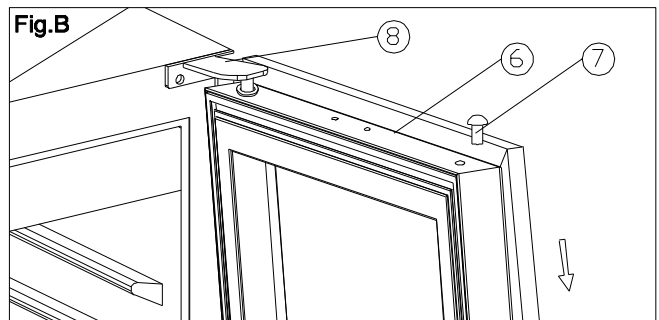
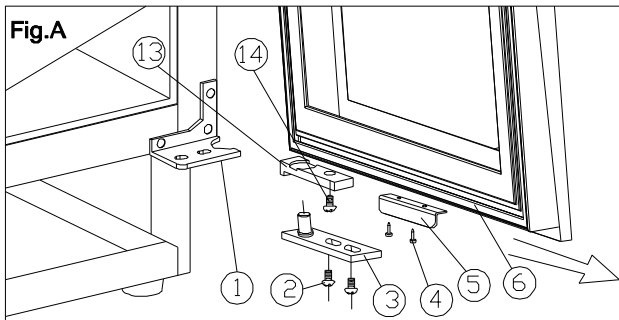
### ➤ **NOTE:**

- If the unit is unplugged, power lost, or turned off, you must wait 3 to 5 minutes before restarting the unit. If you attempt to restart before this time delay, the Wine cooler/beverage cooler will not start.
- When you use the Wine cooler/beverage cooler for the first time or restart the Wine cooler/beverage cooler after having been shut off for a long time, there could be a few degrees variance between the temperature you select and the one indicated on the LED readout. This is normal and it is due to the length of the activation time. Once the Wine cooler/beverage cooler is running for a few hours everything will be back to normal.

## ➤ How to change the door opening

This appliance has reversible doors but is delivered with a right hinged door. The left hand hinge kit comes with the unit (in the box), should you wish to reverse the hinge on your unit.

- |                      |               |                      |
|----------------------|---------------|----------------------|
| 1.Lower Hinge(Right) | 2.Screws      | 3.Door Axis          |
| 4.Screws             | 5.Actuator    | 6.Door               |
| 7.Plastic Caps       | 8.Top Hinge   | 9.Hinge Screws       |
| 10.Top Hinge(Left)   | 11.Hole Cover | 12.Lower Hinge(Left) |
| 12.Door Limit Device | 13.Screw      |                      |

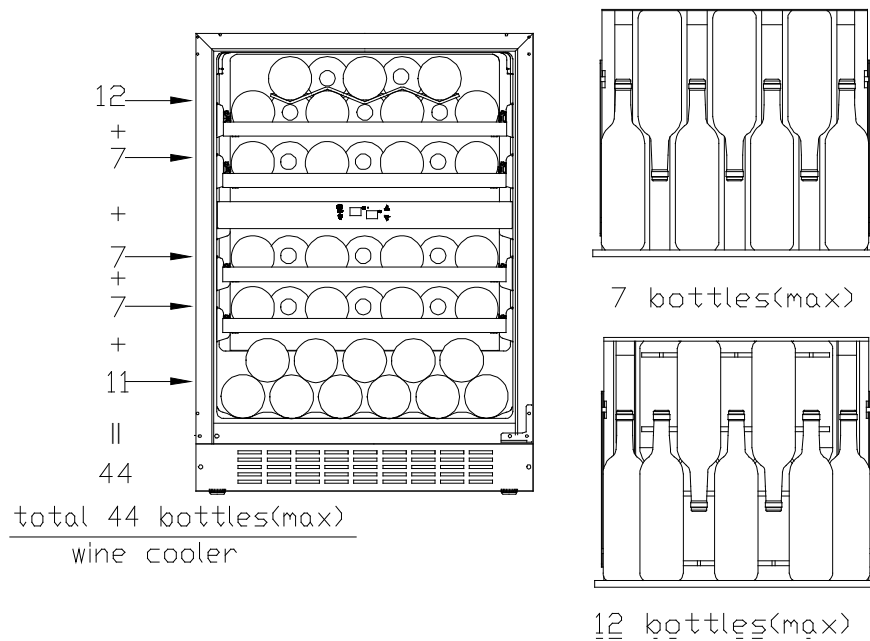


- 1.Open the door to a 90 degrees angle, take out the 2 screws (2) from lower door axis (3), remove the door (6), Remove the axis plate (3) from the door. (Fig. A)
- 2.Unscrew the screw (14) located underneath the door frame and the limit device (13), and relocate it at right top of the door frame. (Fig. A/B)
- 3.Remove two screws securing (4) the actuator (5) and remove it from the door. Install the actuator at the top of the door frame.(Fig. A)
- 4.Remove plastic caps(7) from the door.(Fig.B)
- 5.Take out the 3 hinge screws (9) from the top hinge (right) (8) and remove it. (Fig. C)
- 6.Remove decorative nail from left top of cabinet and install spare top hinge (Left) (10) at left top of cabinet with 3 screws. (Fig. D)
- 7.Following the above procedure, install the spare lower hinge to the left (12). (Fig. E)
- 8.When reinstalling the door, it will need to be flipped 180° from its original position to ensure that the handle is on the correct side and that the actuator is on the bottom. Install the door by sliding it onto the top hinge pin, then replace the door axis by placing the hinge pin in the bottom of the door and securing it to the bottom left hinge with two screws.(Fig. E)
9. Insert the plastic caps(7) to cover the holes.

➤ **Storage diagram**

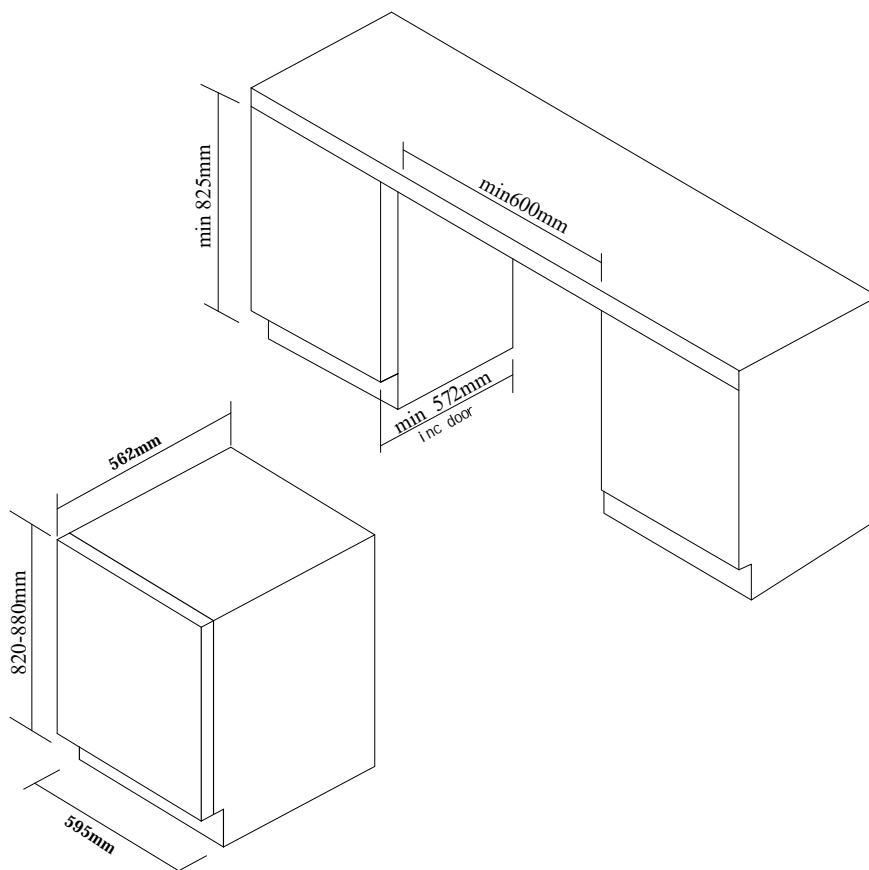
According to the actual configuration of your product, please check the relative Storage diagram.

Total: 44 bottles (Max)



The most energy-saving configuration requires food box not to be positioned in the product.

➤ **Installation specifications for built-in purposes**



## CARE AND MAINTENANCE

### ➤ Cleaning Your Wine Cooler

- Turn off the power, unplug the appliance, and remove all items including shelves and rack.
- Wash the inside surfaces with a warm water and baking soda solution. The solution should be about 2 tablespoons of baking soda to a quart of water.
- Wash the shelves with a mild detergent solution.
- Wring excess water out of the sponge or cloth when cleaning area of the controls, or any electrical parts.
- Wash the outside cabinet with warm water and mild liquid detergent. Rinse well and wipe dry with a clean soft cloth.

### ➤ Power Failure

- Most power failures are corrected within a few hours and should not affect the temperature of your appliance if you minimize the number of times the door is opened. If the power is going to be off for a longer period of time, you need to take the proper steps to protect your contents.

### ➤ Vacation Time

- **Short vacations:** Leave the Wine Cooler operating during vacations of less than three weeks.
- **Long vacations:** If the appliance will not be used for several months, remove all items and turn off the appliance. Clean and dry the interior thoroughly. To prevent odor and mold growth, leave the door open slightly: blocking it open if necessary.

### ➤ Moving Your Wine Cooler

- Remove all items.
- Securely tape down all loose items (shelves) inside your appliance.
- Turn the adjustable leg up to the base to avoid damage.
- Tape the door shut.
- Be sure the appliance stays secure in the upright position during transportation. Also protect outside of appliance with a blanket, or similar item.

### ➤ Energy Saving Tips

- The Wine Cooler should be located in the coolest area of the room, away from heat producing appliances, and out of the direct sunlight.

### ➤ The following (approximate) temperatures are recommended for wine drinking:

- |  |            |
|--|------------|
| • For storing ALL TYPES OF WINES   | 12 – 14 °C |
| • Champagne NV, Sparkling  | 6 °C       |
| • Champagne Vintage  | 10 °C      |
| • Dry White Semillon, Sauvignon Blanc  | 8 °C       |
| • Dry White Gewürztraminer, Riesling   | 10 °C      |
| • Dry White Chardonnay   | 10 °C      |
| • Vintage Chardonnay   | 14 °C      |
| • Sweet White Sauternes Monbazillac, Late Harvest ice wine   | 10 °C      |
| • Sweet whites vintage Sauternes   | 14 °C      |
| • Beaujolais   | 13 °C      |
| • Red Pinot Noir   | 16 °C      |
| • Vintage Pinot Noir red   | 18 °C      |
| • Red Grenache, Syrah  | 16 °C      |
| • Red Cabernet, Merlot, French, Australian, New Zealand, Chilean, Argentinean, Italian, Spanish, Californian | 18 °C      |

## PROBLEMS WITH YOUR WINE COOLER/BEVERAGE COOLER?


You can solve many common Wine cooler/beverage cooler problems easily, saving you the cost of a possible service call. Try the suggestions below to see if you can solve the problem before calling the servicer.

### TROUBLESHOOTING GUIDE

PROBLEM	POSSIBLE CAUSE
Wine cooler/beverage cooler does not operate.	Not plugged in. The appliance is turned off. The circuit breaker tripped or a blown fuse.
Wine cooler/beverage cooler is not cold enough.	Check the temperature control setting. External environment may require a higher setting. The door is opened too often. The door is not closed completely. The door gasket does not seal properly.
Turns on and off frequently.	The room temperature is hotter than normal. A large amount of contents has been added to the Wine cooler/beverage cooler. The door is opened too often. The door is not closed completely. The temperature control is not set correctly. The door gasket does not seal properly.
The light does not work.	Not plugged in. The circuit breaker tripped or a blown fuse. The bulb has burned out. The light button is "OFF".
Vibrations.	Check to assure that the Wine cooler/beverage cooler is level.
The Wine cooler/beverage cooler seems to make too much noise.	The rattling noise may come from the flow of the refrigerant, which is normal. As each cycle ends, you may hear gurgling sounds caused by the flow of refrigerant in your Wine cooler/beverage cooler. Contraction and expansion of the inside walls may cause popping and crackling noises. The Wine cooler/beverage cooler is not level.
The door will not close properly.	The Wine cooler/beverage cooler is not level. The door was reversed and not properly installed. The gasket is dirty. The shelves are out of position.

#### Before disposal of the appliance.

1. Disconnect the main plug from the main socket.
2. Cut off the main cable and discard it.

	Correct disposal of this product
	This symbol on the product, or in its packaging, indicates that this product may not be treated as household waste. Instead, it should be taken to the appropriate waste collection point for the recycling of electrical and electronic equipment. By ensuring this product is disposed of correctly, you will help prevent potential negative consequences for the environment and human health, which could otherwise be caused by the inappropriate waste handling of this product. For more detailed information about the recycling of this product, please contact your local council, your household waste disposal service, or the shop where you purchased the product.