



# User manual Heat Pump Tumble Dryer

HD90-A2959E-UK

**Haier**

EN



Thank you for choosing this product.  
We are proud to offer the ideal product for you and the best complete range of home appliances for your daily routine.



Please read and follow these instructions carefully and operate the machine accordingly. This booklet provides important guidelines for safe use, installation, maintenance and some useful advice for best results when using your machine. Keep all documentation in a safe place for future reference or for any future owners.

Please check that the following items are delivered with the appliance:

- Instruction manual
- Guarantee card
- Energy label

Check that no damage has occurred to the machine during transit. If it is, call for service by Customer Service Centre. Failure to comply with the above can compromise the safety of the appliance. You may be charged for a service call if a problem with your machine is caused by misuse or by incorrect installation.

To contact the Service, ensure that you have the unique 16-character code available, also called the "serial number". This code is a unique code for your product, printed on the sticker that can be found inside the door opening.

WEEE contains both polluting substances (which can cause negative consequences for the environment) and basic components (which can be re-used). It is important to have WEEE subjected to specific treatments, in order to remove and dispose properly all pollutants, and recover and recycle all materials. Individuals can play an important role in ensuring that WEEE does not become an environmental issue; it is essential to follow some basic rules:

- WEEE should not be treated as household waste;
- WEEE should be handed over to the relevant collection points managed by the municipality or by registered companies. In many countries, for large WEEE, home collection could be present.

In many countries, when you buy a new appliance, the old one may be returned to the retailer who has to collect it free of charge on a one-to-one basis, as long as the equipment is of equivalent type and has the same functions as the supplied equipment.

## Contents

- 1. GENERAL SAFETY RULES**
- 2. DRAIN HOSE KIT**
- 3. WATER CONTAINER**
- 4. DOOR AND FILTERS**
- 5. PRACTICAL HINTS**
- 6. REMOTE CONTROL (hOn)**
- 7. QUICK USER GUIDE**
- 8. CONTROLS AND PROGRAMMES**
- 9. TROUBLESHOOTING AND WARRANTY**

## Environmental conditions



This appliance is marked according to the European directive 2012/19/EU on Waste Electrical and Electronic Equipment (WEEE).

# 1. GENERAL SAFETY RULES

- This appliance is intended to be used in household and similar applications such as:

- Staff kitchen areas in shops, offices and other working environments;
- Farm houses;
- By clients in hotels, motels and other residential type environments;
- Bed and breakfast type environments.

A different use of this appliance from household environment or from typical housekeeping functions, as commercial use by expert or trained users, is excluded even in the above applications. If the appliance is used in a manner inconsistent with this it may reduce the life of the appliance and may void the manufacturer's warranty. Any damage to the appliance or other damage or loss arising through use that is not consistent with domestic or household use (even if located in a domestic or household environment) shall not be accepted by the manufacturer to the fullest extent permitted by law.

- This appliance can be used by children aged from 8 years and above and persons with reduced physical, sensory or mental capabilities or lack of experience and knowledge if they have been given supervision or instruction concerning use of the appliance

in a safe way and understand the hazards involved.

Children shall not play with the appliance. Cleaning and user maintenance shall not be made by children without supervision.

- Children should be supervised to ensure that they do not play with the appliance.
- Children of less than 3 years should be kept away unless continuously supervised.



## **WARNING**

**Misuse of a tumble dryer may create a fire hazard.**

- This machine is solely for domestic use, i.e. to dry household textiles and garments.
- Ensure that the instructions for installation and use are fully understood before operating the appliance.
- Do not touch the appliance when hands or feet are damp or wet.
- Do not lean on the door when loading the machine or use the door to lift or move the machine.
- Do not continue to use this machine if it appears to be faulty.

- The tumble dryer is not to be used if industrial chemicals have been used for cleaning.

items are left at a temperature that ensures that the items will not be damaged.



## WARNING

**Do not use the product if the fluff filter is not in position or is damaged; fluff could be ignited.**

- Lint and fluff must not be allowed to collect on the floor around the outside of the machine.




## WARNING

**Never stop a tumble dryer before the end of the drying cycle unless all items are quickly removed and spread out so that the heat is dissipated.**



## WARNING

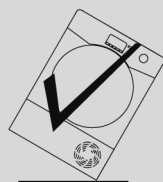
**Where the hot surface symbol  is located the temperature rise during operation of the tumble dryer may be in excess of 60 degrees C.**

- Always remove the plug before cleaning the appliance.
- The drum inside may be very hot. Always allow the dryer to complete the cool down period before removing the laundry.
- The final part of a tumble dryer cycle occurs without heat (cool down cycle) to ensure that the



## WARNING

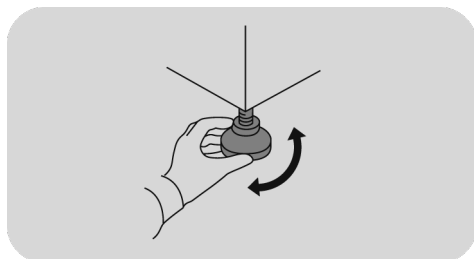
**During transport ensure that the dryer is in an upright position, if it's necessary you can only flip in the side shown.**



**If the product is in different side, wait at least 4 hours before switching on so that the oil can flow back into the compressor. Failure to do this could result in damage to the compressor.**

## Installation

- Do not install the product in a low temperature room or in a room where there is a risk of frost occurring. At temperature around freezing point the product may not be able to operate properly: there is a risk of damage if the water is allowed to freeze in the hydraulic circuit (valves, hoses, pumps). For a better product performance the ambient room temperature must be between 5-35°C. Please note that operating in cold condition (between +2 and +5°C) might simply some water condensation and water drops on floor.
- In cases where the dryer is installed on top of a washing machine, a stacking kit must be used. Not every washing machine is suitable for this purpose. The stacking kit shall be obtainable from Customer Service. The instructions for installation and any fixing attachments, are provided with the stacking kit.
- NEVER install the dryer up near curtains.
- The appliance must not be installed behind a lockable door, a sliding door or a door with a hinge on the opposite side to that of the tumble dryer, in such way that a full opening of the tumble dryer door is restricted.
- For your safety, the appliance must be correctly installed. If there is any doubt about installation, call Customer Service for advice.
- Once the machine is in place the feet should be adjusted to ensure that the machine is level.



## Reversing the door

- Before you start, unplug the dryer from the socket.
- Handle parts carefully to avoid scratching paint.
- Provide a non-scratching work surface for the doors.
- Tools you will need: TORX-T20-head screwdriver.
- Once you begin, do not move the cabinet until door reversal is completed.

- These instructions are for changing the hinges from the right side to the left side. If you want to switch them back to the right side, follow these same instructions and reverse all references from left to right.

### 1. Remove the door assembly

Open the door. Remove the two screws holding the hinge/door assembly to the dryer.

### 2. Remove and rotate the inner door

Remove the three stickers and screws near the hinge. Afterwards, remove the eight stickers and screws securing the inner door to the outer door.

Disassemble the inner door and rotate it 180°.

Remove the screw under the touch pole and reposition it in the opposite side (180°). Tight the screw in order to secure the touch pole.

### 3. Rotate and replace the plastic transparent middle door.

Remove the plastic transparent middle door and rotate it 180°.

### 4. Reassembly the inner door

Reinstall the inner door into the outer door using the same eight screws and stickers.

### 5. Remove, rotate and replace the door lock & strike plate

Remove the two screws holding the strike plate, and then remove one screw of the door lock, push down and take out the lock, rotate 180° and install it on the opposite side using the same 3 screws.

### 6. Rotate and replace the hinge/door assembly

Rotate the hinge/door assembly and screw it on the dryer.

## Electrical connections and safety instructions

- The technical details (supply voltage and power input) are indicated on the product rating plate.
- Make sure that the electrical system is earthed, complies with all applicable law and that the (electricity) socket is compatible with the plug of the appliance. Otherwise, seek qualified professional assistance.



### WARNING

**The appliance must not be supplied through an external switching device, such as a timer, or connected to a circuit that is regularly switched on and off by a utility.**

- Do not use adapters, multiple connectors and/or extensions.
- The plug should be accessible for disconnection after the appliance has been installed.
- Do not plug the machine in and switch it on at the mains until the installation is completed.
- If the supply cord is damaged, it must be replaced by the manufacturer, its service agent or similarly qualified persons in order to avoid a hazard.
- Prevent items from falling or collecting behind the dryer as these may obstruct the air inlet and outlet.
- Exhaust air must not be discharged into a flue which is used for exhausting fumes from appliances burning gas or other fuels.
- Check regularly that the air flowing around the dryer is not restricted, avoiding accumulation of dust and lint.
- Check frequently the fluff filter after use, and clean, if necessary.

## Ventilation

- Adequate ventilation must be provided in the room where the tumble dryer is located to prevent gases from appliances burning other fuels, including open fires, being drawn into the room during operation of the tumble dryer.
- Install the rear of the appliance close to a wall or vertical surface.
- There should be a gap of at least 12 mm between the machine and any obstructions. The inlet and outlet air should be kept clear of obstruction.
- Make sure carpets or rugs do not obstruct the base or any of the ventilation openings.

## The Laundry

- Always refer to the laundry care labels for directions on suitability for drying.
- Fabric softeners, or similar products, should be used as specified by the fabric softener instructions.
- Do not dry unwashed items in the tumble dryer.
- Clothes should be spin dried or thoroughly wrung before they are put into the tumble dryer.
- Clothes that are dripping wet should not be put into the dryer.





## WARNING

Foam rubber materials can, under certain circumstances, when heated become ignited by spontaneous combustion. Items such as foam rubber (latex foam), shower caps, waterproof textiles, rubber backed articles and clothes or pillows fitted with foam rubber pads **MUST NOT** be dried in the tumble dryer.

- Remove all objects from pockets such as lighters and matches.
- Lighters and matches must not be left in pockets and **NEVER** use flammable liquids near the machine.
- Maximum load drying weight: see energy label.
- To consult the product technical specification please refer to the manufacturer website.

2



## WARNING

**Do not tumble dry fabrics treated with dry cleaning fluids.**

- Glass fibre curtains should **NEVER** be put in this machine. Skin irritation may occur if other garments are contaminated with the glass fibres.
- Items that have been soiled with substances such as cooking oil, acetone, alcohol, petrol, kerosene, spot removers, turpentine, waxes and wax removers should be washed in hot water with an extra amount of detergent before being dried in the tumble dryer.



## **WARNING**

**Fire hazard / Flammable materials.**

- The appliance contains **R290**, an eco-sustainable refrigerating gas that is flammable. Keep open flames and sources of ignition away from the appliance.
- Check there is no visible damage on the appliance. Do not use the appliance if it is damaged.
- Should there be any kind of problem, please contact your specialised retailer or one of our customer support centres.

## **WARNING**

**Ensure that the openings on the appliance and the openings of the compartment the appliance is fitted in (for built-in models) are clear of obstructions.**

## **WARNING**

**Do not damage the refrigerating circuit.**

- Any repairs or interventions on the appliance must be carried out only by an authorised assistance service.
- Disposing of the device incorrectly could cause fires or poisoning.
- Dispose of the device correctly and do not damage the pipes used for the circulation of the refrigerating fluid.

## 2. DRAIN HOSE KIT

In order to avoid to empty the water container after each drying cycle, the water can be discharged directly to a waste water drain pipe. Water Bye-Laws prohibit connection to a surface water drain. The waste water drain pipe should be located adjacent to the tumble dryer.

The kit consists of: 1 hose and 1 bung.



### WARNING

Switch off and remove the tumble dryer plug from the electricity supply before carrying out any work.

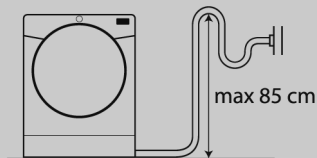
The hose must be connected to a drain system with a maximum height of 85 cm compared to the base of the dryer (figure 1).

### Fitting the drain hose

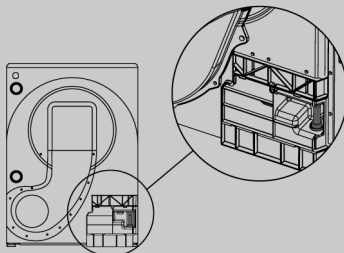
1. The water drainage system is located at the back of the machine on the lower right side (figure 2).
2. Disconnect the hose (A) from the fitting (B) by pulling it upwards (figure 3).
3. Close the extracted tube with the cap (C) supplied with the kit (figure 4).
4. Connect the hose into the fitting (B) making sure it is inserted securely (figures 5-6).

Once the machine is in place, check to ensure that the new hose does not kink when pushing the tumble dryer into position.

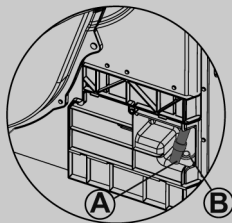
①



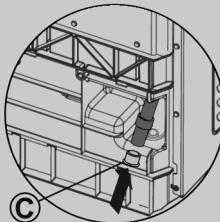
②



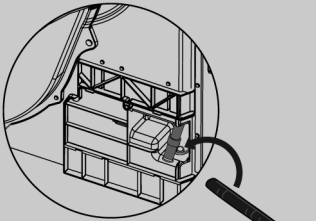
③



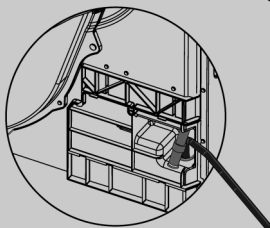
④



⑤



⑥



### 3. WATER CONTAINER

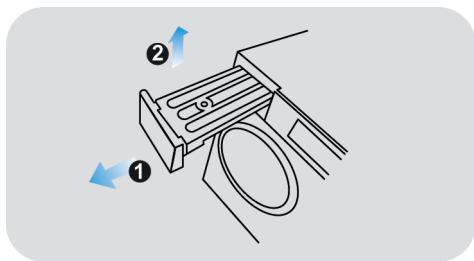
The water removed from the laundry during the drying cycle is collected in a container. When the container is full, an indicator light will advise you that it **MUST** be emptied (however, we recommend to empty it after each drying cycle).

**Very little water will collect during the first few cycles of a new machine as an internal reservoir is filled first.**

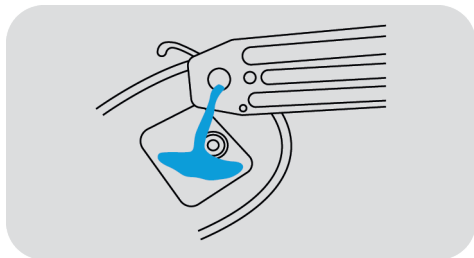
#### Empty the water tank

During operation, steam is condensed into water and collected in the water tank. Empty the water tank after each drying cycle.

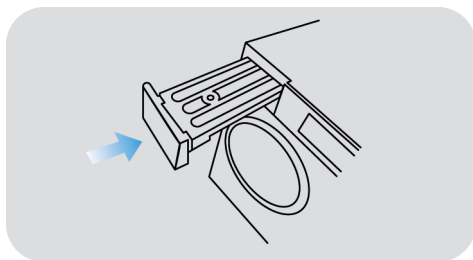
1. Pull out the water tank from its housing.



2. Empty the water tank.



3. Reinstall the water tank to the tumble dryer.



#### WARNING

Do not use the water for any kind of drinking or food processing.

#### ONLY FOR MODELS WITH DRAIN HOSE KIT

If you have the option of drainage near to the dryer you can use the discharge kit to provide a permanent drainage for the water collected in the container of the dryer. This means that you don't have to empty the water container.

## 4. DOOR AND FILTERS

### Door

- Pull on handle to open the door.
- To restart the appliance, close the door and press the programme start button.

### Drum interior light

When the appliance is switched on, the drum light will keep on when the door is open.



### WARNING

**When the tumble dryer is in use the drum and door may be VERY HOT.**

In order to have the maximum effectiveness of the machine, checking the cleanliness of all filters before each drying cycle is essential.

NE



### WARNING

**Do not use the tumble dryer without the filters.**

### Lint filters and sponge filter cleaning indicator light

The indicator light illuminates in fixed mode to signal the need of cleaning the lint filters and in blinking mode to signal the need of cleaning the sponge filter.

### Filters

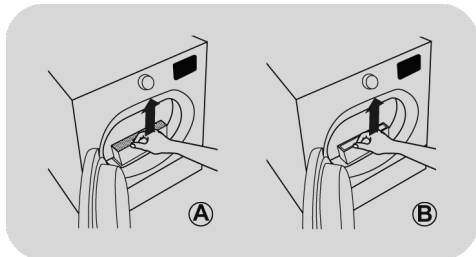
**Clogged filters could increase the drying time and cause damages and expensive cleaning operation.**

If the laundry is not drying check that the filters are not clogged.

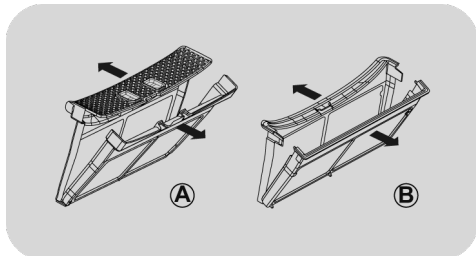
**If you clean filters under water, remember to dry them.**

## To clean the lint filters

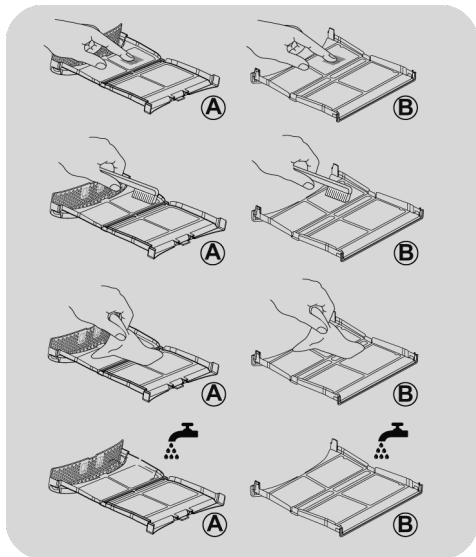
1. Extract the two filters **A** and **B** in sequence pulling them upwards, as shown in the figure.



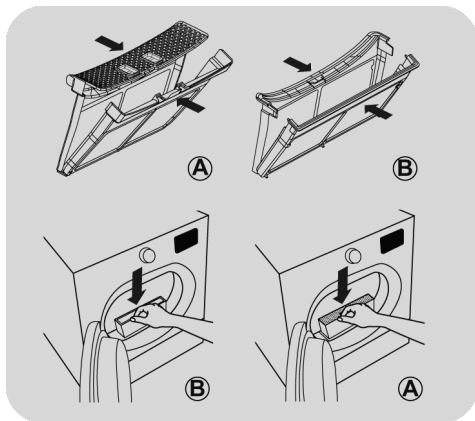
2. Open the filters.



3. Gently remove lints from both filters using your fingertips or a soft brush, a cloth or under water running.



4. Close both filters by repositioning them inside the door, making sure they are positioned correctly in place.



### WARNING

Before reinserting the filters, make sure there is no lint residue inside the compartment; if not, remove it with a vacuum cleaner.

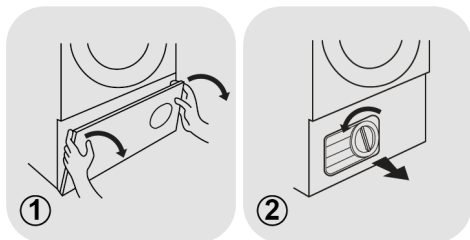


### WARNING

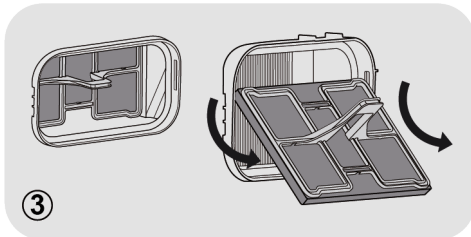
Clean the lint filters before every cycle.

## To clean the sponge filter

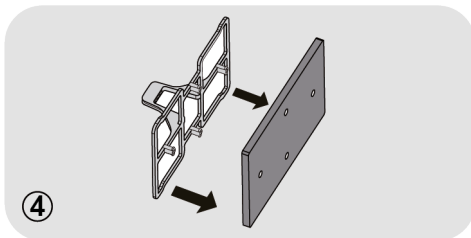
1. Remove the kickplate.
2. Turn the handle anti-clockwise and pull out the front cover.



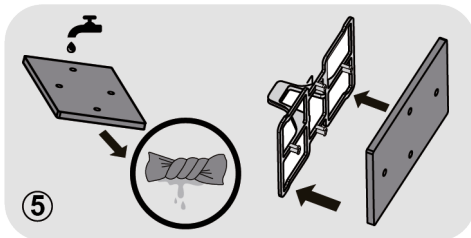
3. Gently remove the sponge filter frame.



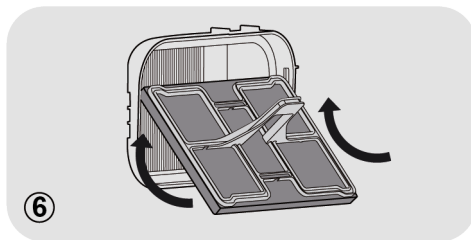
4. Gently remove the sponge from the frame.



5. Wash the sponge by holding it under a running tap turning it so to remove any dust or fluff. Wring out the sponge and refit it carefully on the frame.

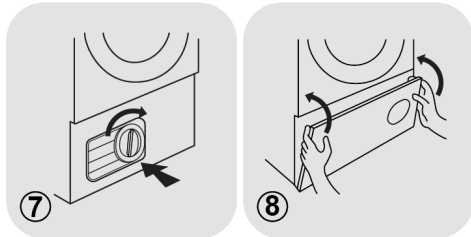


6. Refit the sponge filter frame ensuring that it is in the correct position.



7. Refit the front cover ensuring it is in the right position. Turn the handle clockwise to lock the front cover.

8. Refit the kickplate.



### WARNING

Do not touch the fins behind the sponge filter frame with hands in order to avoid injury.



### WARNING

Clean the sponge filter every six months or when the filters cleaning indicator light blinks.

## 5. PRACTICAL HINTS

Before using the tumble dryer for the first time:

- Please read this instruction book thoroughly.
- Remove all items packed inside drum.
- Wipe the inside of the drum and door with a damp cloth to remove any dust which may have settled in transit.

### Clothes preparation

Make sure that the laundry you are going to dry is suitable for drying in a tumble dryer, as shown by the care symbols on each item. Check that all fastenings are closed and that pockets are empty. Turn the articles inside out. Place clothes loosely in the drum to make sure that they don't get tangled.

### Do not tumble dry

Silk, nylon stockings, delicate embroidery, fabrics with metallic decorations, garments with PVC or leather trimmings.



### WARNING

**Do not dry articles which have been treated with a dry cleaning fluid or rubber clothes (danger of fire or explosion).**

**During the last 15 minutes the load is always tumbled in cool air.**

### Energy saving

Only put into the tumble dryer laundry which has been thoroughly wrung or spin-dried. The drier the laundry the shorter the drying time thus saving electricity.

### ALWAYS

- Check that the filters are clean before every drying cycle.

### NEVER

- Put dripping wet items into the tumble dryer, this may damage the appliance.

### Sort the load as follows

#### ● By care symbols

These can be found on the collar or inside seam:



Suitable for tumble drying.



Tumble drying at high temperature.



Tumble drying at low temperature only.



Do not tumble dry.

If the item does not have a care label it must be assumed that it is not suitable for tumble drying.

#### ● By amount and thickness

Whenever the load is bigger than the dryer capacity, separate clothes according to thickness (e.g. towels from thin underwear).

#### ● By type of fabric

**Cottons/linen:** Towels, cotton jersey, bed and table linen.

**Synthetics:** Blouses, shirts, overalls, etc. made of polyester or polyamid, as well as for cotton/synthetic mixes.



### WARNING

**Do not overload the drum, large items when wet exceed the maximum admissible clothes load (for example: sleeping bags, duvets).**



## Cleaning the dryer

- Clean the lint filters after every drying cycle.
- In models equipped with a water collection tray, the tray should be emptied after every drying cycle.
- After each period of use, wipe the inside of the drum and leave the door open for a while to allow circulation of air to dry it.
- Wipe the outside of the machine and the door with a soft cloth.
- DO NOT use abrasive pads or cleaning agents.
- To prevent the door sticking or the buildup of fluff clean the inner door and gasket with a damp cloth after every drying cycle.



### WARNING

The drum, door and load may be very hot.

NE



### WARNING

Always switch off and remove the plug from the electricity supply before cleaning this appliance.



### WARNING

For electrical data refer to the rating label on the front of the dryer cabinet (with the door open).

## 6. REMOTE CONTROL (hOn)

This appliance is equipped with **Wi-Fi** technology that allows you to control it remotely via App.

### APPLIANCE PAIRING (ON APP)

- Download the **hOn App** on your device by framing the following QR code:



or by the link:

**[go.haier-europe.com/download-app](https://go.haier-europe.com/download-app)**

The App is available for devices running both Android and iOS, both for tablets and for smartphones.


Get all the details of the Wi-Fi functions by browsing the App in **DEMO** mode.

The frequency of the home Wi-Fi network has to be set on the 2.4 GHz band. You can not configure the machine if your home network is set to the 5 GHz band.

- Open the App, create the user profile (or log-in if it is already created previously) and pairing the appliance following the instructions on the device display.

### TO ENABLE REMOTE CONTROL

- Check that the router is switched on and connected to the Internet.
- Load the laundry and close the door.
- Turn the programme selector to the

**Remote**  position: the controls on the control panel will be disabled.

- Start the cycle using the app. When the cycle has been completed, turn off the machine.

### TO DISABLE REMOTE CONTROL

- To exit **REMOTE CONTROL** mode while a cycle is underway, turn the programme selector to any position other than **Remote**. The control panel on the appliance will be operative once again.
- With the door closed, turn the programme selector to the **Remote** position to control the appliance using the app once again. If there is a cycle underway, it will continue.

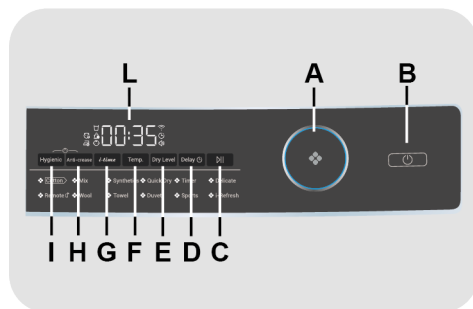
With the door opened, the **REMOTE CONTROL** will be disabled. To enable it again, close the door, turn the programme selector to any position other than Remote and then select it again.

## 7. QUICK USER GUIDE

1. Open the door and load the drum with laundry. Ensure that garments do not hinder closure of the door.
2. Gently close the door pushing it slowly until you hear the door 'click' shut.
3. Turn ON the appliance by pressing the **ON/OFF** button.
4. Select the desired drying programme by turning the programme selector.
5. Press the programme start button. The dryer will start automatically.
6. If the door is opened during the programme to check the laundry, it is necessary to press programme start to recommence drying after the door has been closed.
7. When the cycle is nearing completion the machine will enter the cool down phase, the clothes will be tumbled in cool air allowing the load to cool down.
8. Following the completion of the cycle the drum will rotate intermittently to minimize creasing. This will continue until the machine is switched OFF or the door is opened.

**Do not open the door during the automatic programmes in order to obtain a proper drying.**

## 8. CONTROLS AND PROGRAMMES



- A PROGRAMME SELECTOR (knob)**
- B ON/OFF button**
- C START/PAUSE button**
- D DELAY button**
- E DRY LEVEL button**
- F TEMPERATURE button**
- G I-TIME button**
- H ANTI-CREASE button**
- I HYGIENIC button**
- L DISPLAY**
- H+I CHILD LOCK**
- E+F SOUND ON/OFF**

### Technical data

**Power input / Power current fuse amp/ Supply voltage:** see rating plate.  
**Maximum load:** see energy label.  
**Energy class:** see energy label.



## WARNING

**Don't touch the buttons while inserting the plug because the machines calibrates the systems during the first seconds: touching the buttons, the machine couldn't work properly. In this case, remove the plug and repeat the operation.**

## PROGRAMME SELECTOR

Rotating the programme selector in both directions it's possible to select the desired drying programme.

### ON/OFF button

In order to turn ON or OFF the appliance please press this button (remember to unplug the appliance when turning OFF the machine).

### START/PAUSE button

**Close the porthole BEFORE pressing the START/PAUSE button.**

- To start the selected cycle with the preset parameters, press **START/PAUSE**. When the programme is running, the display will show the time to elapse.
- Moreover, if you want to modify the chosen programme, press the desired options buttons, modify the default parameters and then press **START/PAUSE** button to start the cycle.

**Only the options compatible with the set programme can be selected.**

- After switching on the appliance, wait a few seconds for the programme to start running.

### PROGRAMME DURATION

- When a programme is selected the display automatically shows the cycle duration, which can vary, depending on the options selected.

- Once the programme has started you will be kept informed constantly of the time remaining to the end of the drying cycle.

- The appliance calculates the time to the end of the selected programme based upon a standard loading, during the cycle, the appliance corrects the time to the humidity level of the load.

### PROGRAMME END

"**END**" will appear in the display and it will stay fix for **2 minutes** at the end of the programme. After that the machine will turn OFF automatically.

**The TURN ON/OFF button must ALWAYS be pressed at the end of the drying cycle before a new one can be selected.**

### PAUSING THE MACHINE

- Keep the **START/PAUSE** button pressed for about **2 seconds** (the residual time display will flash, showing that the machine is paused).
- Press the **START/PAUSE** button again to re-start the programme from the point it had been paused at.

### CANCELLING THE SET PROGRAMME

To cancel the programme you should turn OFF the appliance.

*If there is a break in the power supply whilst the machine is operating, when the power is restored, by pressing the **START/PAUSE** button, the machine will restart from the beginning of the phase it was in when the power was lost.*

### DELAY button

- This button allows to delay the start of the programme from **30 minutes to 24 hours** in **30 minutes** intervals. The delay selected is shown on the display.

- After pressing the **START/PAUSE** button the time showed decrease minute after minute.

**Opening of the porthole with delayed start set, after re-closing the porthole, press start again to resume the counting.**

## DRY LEVEL button

This button allows to set the desired dryness level. On the display is shown as below:

- H - 1 **Ready to Iron:** it leaves the garments slightly wet to facilitate ironing.
- H - 2 **Ready to Wear:** to get garment ready to be hang.
- H - 3 **Cupboard:** for laundry that can be directly stored.

## TEMPERATURE button

This button is set to adjust drying temperature based on personal needs and requirements. There are **3 levels** and matching display is shown below:

- L - 3 High temperature.
- L - 2 Middle temperature.
- L - 1 Low temperature.

## I-TIME button

- This function is designed to allow users to adjust cycle duration based on personal needs (**can be used only on some programmes as shown in the table of programmes**).
- The progressive pressure increases the time in **10 minutes** intervals. After this selection to reset the automatic drying functioning is necessary to switch off the dryer.

***In case of incompatibility, the indicator light goes to TIMER programme.***

## ANTI-CREASE button

- **ANTI-CREASE** function is designed to help remove wrinkles of clothes. The drum will rotate after the drying cycle to stretch clothes so there is no need to worry about forgetting to take out clothes. When the drying cycle ends, if **ANTI-CREASE** was previously selected the indicator will light up. The drum will keep rotation for another 6 hours with cold wind in.
- To stop the movements press **ON/OFF** button. Useful when it's not possible to remove immediately the laundry.

## HYGIENIC button\*

- **HYGIENIC** function is designed to kill bacteria and mites as well as virus on clothes with high temperature. When selecting the **HYGIENIC** function, this indicator is the perfect cycle to use if you want to remove bad smells from the linens smoothing creases. This cycle can quickly refresh the garments that you need, ensuring the best compromise between time and drying performance. After selecting **HYGIENIC** function, this button will keep light on for the whole cycle duration.
- If you want to select this option, press the **HYGIENIC** button once. It is available only during program selection. This option overwrites the program selected with a dedicated one.
- If you want to deselect the **HYGIENIC** option, press the **HYGIENIC** button. When you deselect the option, the machine will show again the original program name.

**\*BAF certificated**

## CHILD LOCK

- Pressing simultaneously the buttons **"H"** and **"I"** for about **3 seconds**, the machine allows you to lock the keys. In this way, you can avoid making accidental or unwanted changes if a button on the display is pressed accidentally during a cycle.

- The key lock can be simply cancelled by pressing the two buttons simultaneously again.

- In case of opening of porthole with activated **CHILD LOCK**, the cycle stops but the lock is kept: to restart the cycle, you must remove the lock and press **START/PAUSE** again.

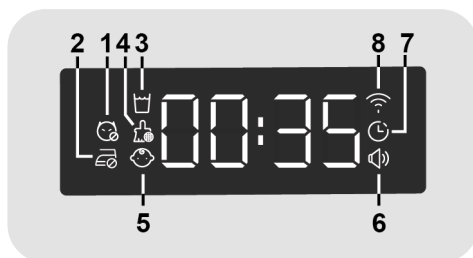
- **CHILD LOCK** can be modified at any time of the cycle.

## SOUND ON/OFF

- The buzzer is design to alert users with a sound. It is deactivated by default. In order to activate the buzzer function, press simultaneously the buttons **"E"** and **"F"** for about **3 seconds**.
- The buzzer function can be simply cancelled by pressing the two buttons simultaneously again.

## DISPLAY

The display shows the remaining time for drying, the postponed time in case of delayed start selection and other notifications setting.



### 1) HYGIENIC INDICATOR LIGHT

The indicator light shows the selection of the relevant option.

### 2) ANTI-CREASE INDICATOR LIGHT

The indicator light shows the selection of the relevant option.

### 3) EMPTY WATER TANK INDICATOR LIGHT

It lights up to remind to empty the water tank.

**Empty the water tank after each drying cycle.**

### 4) LINT FILTERS AND SPONGE FILTER CLEANING INDICATOR LIGHT

It lights up to remind to clean the filters before using the machine: the indicator light illuminates in fixed mode to signal the need of cleaning the lint filters and in blinking mode to signal the need of cleaning the sponge filter.

### 5) CHILD LOCK INDICATOR LIGHT

The indicator light shows that the keys are locked.

### 6) SOUND ON/OFF INDICATOR LIGHT

The indicator light shows if the buzzer is activated.

### 7) DELAY INDICATOR LIGHT


The indicator light shows the selection of the relevant option.

### 8) Wi-Fi INDICATOR LIGHT

- On models equipped with Wi-Fi, it indicates the status of the connection. It could be:

- **FIXED ON:** remote control enabled.
- **SLOW FLASHING:** remote control disabled.
- **QUICK FLASHING FOR 3 SECONDS, THEN OFF (repeated):** the machine cannot connect to the home Wi-Fi network or has not yet been associated with the App.
- **SLOW BLINKING FOR 3 TIMES, THEN OFF FOR 2 SECONDS:** reset of the Wi-Fi network (during the association with the App).
- **ON FOR 1 SECOND, THEN OFF FOR 3 SECONDS:** the door is open. Remote control cannot be activated.

## Drying Guide

The standard cycle COTTON DRY (  ) is the most energy efficient and best suited for drying normal wet cotton laundry.

Maximum Drying Weight	
Cotton	Max. capacity declared
Synthetics	Max. 4 kg

## Information for Test Laboratory

### EN 61121 - Programme To Use

- STANDARD DRY COTTON  (COTTON - Ready to Wear)
- IRON DRY COTTON (COTTON - Ready to Iron)
- EASY-CARE TEXTILE (SYNTHETICS - Ready to Wear)



## WARNING

Clean the lint filters before every cycle.



## WARNING

Clean the sponge filter every six months or when the filters cleaning indicator light blinks.

23



## WARNING






The real duration of drying cycle depends by the starting humidity level of the laundry due to spin speed, type and amount of load, cleanliness of filters and ambient temperature.



## WARNING

Drain the condensed water externally, connecting the drain hose (according to the instruction in the dedicate chapter) when drying a full load using the Cotton programme.

## Table of programmes

					DRYING TIME 	SELECTABLE OPTIONS					
						Hygienic	Anti-crease	i-time	Temp.	Dry Level	Delay 
	8	9	10	11	Min.						
Cotton *	8	9	10	11	150	✓	✓	Timer	✓	✓	✓
Mix	4	4	4	4	114	✓	✓	Timer	✓	✓	✓
Synthetics	4	4	4	4	100	-	✓	Timer	✓	✓	✓
Quick Dry	1	1	1	1	30	-	✓	Timer	✓	-	✓
Timer	8	9	10	11	20	-	✓	✓	✓	-	✓
Delicate	2	2	2	2	100	-	✓	Timer	✓	✓	✓
Remote 	-	-	-	-	-	-	-	-	-	-	-
Wool	1	1	1	1	70	-	-	✓	✓	-	✓
Towel	6	6	6	6	150	✓	✓	Timer	✓	✓	✓
Duvet	-	-	-	-	250	-	✓	Timer	✓	-	✓
Sports	4	4	4	4	86	✓	✓	Timer	✓	✓	✓
i-Refresh	1	1	1	1	10	-	-	✓	✓	-	✓

\* EN 61121 test program setting, we recommend that you drain the condensed water externally through the drain hose when drying a full load using the Cotton program (Ready to Wear).

This will avoid to empty the water tank during the programme.



## Description of programmes

To dry different types of fabrics and colors, the tumble dryer has specific programs to meet every need of drying (see table of programmes).

### Cotton

The Cotton program (Ready to Wear) is the most efficient program in energy consumption. Suitable for cotton clothes and coats. The values on the Energy Label are based on this programme.

### Mix

A new innovative cycle to dry different kinds of fabrics in the same time.

### Synthetics

To dry synthetic fabrics that need an accurate and specific treatment.

### Quick Dry

A short timing cycle that allows you to have items ready in a short time. Perfect to remove the residual humidity from small amounts of light weight chemical fibre or cotton clothing.

### Timer

Specifically design for different types of fabrics. The users can decide with complete autonomy the drying time by themselves.

### Delicate

A cycle design to dry delicate fabrics that need an accurate and specific treatment.

### Remote (hOn)

Position that you have to select when you want to enable/disable remote control through the App, via Wi-Fi.

In this case, the start of cycle will take place through the App commands.

More details in the **REMOTE CONTROL (hOn)** section.

### Wool

Woolen clothes: the program can be used to dry up to 1 kg of laundry (around 3 jumpers). It is recommended to reverse all clothes before drying. Timing can change

due to dimensions and thickness of load and to spinning chosen during washing. At the end of the cycle, clothes are ready to be worn, but if they are heavier, edges can be a bit wet: it is suggested to dry them naturally. It is recommended to unload clothes at the very end of the cycle.

**Attention: felting process of wool is irreversible; please dry exclusively with symbol "ok tumble" on the garment label. This programme is not indicated for acrylic clothes.**

### Towel

This program sets the best drying parameters for towels and other durable fabrics. Providing high heat and keeping at the same time the integrity of the cotton fibres.

### Duvet

The perfect cycle for your duvets, that minimize the tangles and folds thanks specific movements of the drum.

### Sports

Takes care of your technical garments used for sport and fitness: the machine dries gently with special care to avoid shrinking and deterioration of elastic fibres.

### i-Refresh

A cycle that allows the machine to take care of different fabrics together (Cotton & Synthetics) refreshing your clothes and removing the odors by giving new life to your garments.

## 9. TROUBLESHOOTING AND WARRANTY

### What might be the cause of...

#### Defects you can remedy yourself

Before calling Service for technical advice please run through the following checklist. A charge will be made if the machine is found to be working or has been installed incorrectly or used incorrectly. If the problem persists after completing the recommended checks, please call Service, they may be able to assist you over the telephone.

**Time display to end could change during drying cycle. The time to end is continuously checked during the drying cycle and the time is adjusted to give the best estimation time. The displayed time may increase or decrease during the cycle and this is normal.**

**Drying time is too long/clothes are not dry enough...**

- Have you selected the correct drying time/programme?
- Were the clothes too wet? Were the clothes thoroughly wrung or spindried?
- Do the lint filters need cleaning?
- Does the sponge filter need cleaning?
- Is the dryer overloaded?

**The dryer does not operate...**

- Is there a working electricity supply to the dryer? Check using another appliance such as a table lamp.
- Is the plug properly connected to the mains supply?
- Is there a power failure?
- Has the fuse blown?
- Is the door fully closed?

- Is the dryer switched on, both at the mains supply and at the machine?
- Has the drying time or the programme been selected?

- Has the machine been switched on again after opening the door?

- Has the machine stopped working because the water container is full and must be emptied?

**The dryer is noisy...**

- Switch off the dryer and contact Service for advice.

**The filters cleaning indicator light is on...**

- Do the lint filters or the sponge filter need cleaning?

**The water container indicator light is on...**

- Does the water container need emptying?

### Customer Service

Should there still be a problem with your dryer after completing all the recommended checks, please call Service for advice. They may be able to assist you over the telephone or arrange for a suitable appointment for an engineer to call under the terms of your guarantee. However, a charge may be made if any of the following applies to your machine:

- Is found to be in working order.
- Has not been installed in accordance with the installation instructions.
- Has been used incorrectly.

### Spares

Always use genuine spares, available direct from Service.

## Service

To ensure the continued safe and efficient operation of this appliance we recommend that any servicing or repairs are only carried out by an Authorised Service engineer.

### Warranty

The product is guaranteed under the terms and conditions stated on the certificate included with the product. The certificate has to be stored so as to be shown to the Authorized Customer Service Centre in case of need. You can also check the warranty conditions on our web site. To obtain assistance, please fill in the form on-line or contact us at the number indicated on the support page of our web site.

By placing the **CE** mark on this product, we are confirming compliance to all relevant European safety, health and environmental requirements which are applicable in legislation for this product.

2

To ensure safety when disposing of an old tumble dryer disconnect the mains plug from the socket, cut the mains power cable and destroy this together with the plug. To prevent children shutting themselves in the machine break the door hinges or the door lock.

**The manufacturer declines all responsibility for any printing errors in the booklet included with this product. Moreover, it also reserves the right to make any changes deemed useful to its products without changing their essential characteristics.**



# Haier

23.11 - 70034464.A - IDM s.r.l.