



User manual

Heat-Pump-Dryer

HD90-A636

GB

**Haier**

## Thank you for purchasing a Haier Product.

Please read these instructions carefully before using this appliance. The instructions contain important information which will help you get the best out of the appliance and ensure safe and proper installation, use and maintenance.

Keep this manual in a convenient place so you can always refer to it for the safe and proper use of the appliance.

If you sell the appliance, give it away, or leave it behind when you move house, make sure you also pass this manual so that the new owner can become familiar with the appliance and safety warnings.

### Legend



**Warning!** – Important safety information



General information and tips



Environmental information



### Disposal

To protect the environment, please dispose of the packaging materials in an environmentally friendly manner.

Do not dispose appliances marked with this symbol with the household waste. Return the product to your local recycling facility or contact your municipal office.

The heat exchanger of the dryer contains the greenhouse gas HFKW-134a. This must be disposed of properly.



### WARNING!

#### Risk of injury or suffocation!

Disconnect the appliance from the mains supply. Cut off the mains cable and dispose of it. Remove the door catch to prevent children and pets to get closed in the appliance.

Safety information .....	4
Intended use.....	7
Product description.....	8
Control panel.....	9
Programmes.....	13
Consumption .....	14
Suggestions and tips.....	15
Daily use.....	17
Care and cleaning.....	21
Troubleshooting .....	25
Installation.....	28
Accessories .....	29
Technical data .....	30
Customer Service .....	32



## WARNING!

### Before first use

- ▶ Make sure there is no transport damage.
- ▶ Remove all packaging and keep out of children's reach.
- ▶ Handle the appliance always with at least two persons because it is heavy.

### Daily use

- ▶ This appliance can be used by children aged from 8 years and above and persons with reduced physical, sensory or mental capabilities or lack of experience and knowledge if they have been given supervision or instruction concerning use of the appliance in a safe way and understand the hazards involved.
- ▶ Keep away children under 3 years of age from the appliance unless they are constantly supervised.
- ▶ Children shall not play with the appliance.
- ▶ Do make sure the room is dry and well ventilated. The ambient temperature should be between 5 °C and 35 °C.
- ▶ Do not cover any ventilation openings in the base by a carpet or similar object.
- ▶ Keep the area around the tumble dryer free of dust and lint.
- ▶ Do make sure that there is only laundry inside the appliance and no pets or children before you use it.
- ▶ Only touch the mains plug with dry hands and do not touch or use the appliance if you are barefoot or have wet or damp hands or feet.
- ▶ Only dry textiles washed in water.
- ▶ Do make sure not to load more than nominal load.
- ▶ Remove all items such as lighters and matches from pockets.
- ▶ Use fabric softeners or similar products as specified by the manufacturer's packaging.
- ▶ Do not use or store any flammable sprays or flammable gas in close vicinity to the appliance.
- ▶ Do not place heavy objects or sources of heat or damp on top of the appliance.
- ▶ Hold the plug, not the cable, when unplugging the appliance.
- ▶ Do not touch the rear wall and the drum during operation; they are hot.

**WARNING!****Daily use**

- ▶ Do not dry following items in the appliance:
  - ▶ Items which are unwashed.
  - ▶ Items which have been contaminated with inflammable substances such as cooking oil, acetone, alcohol, benzine, petrol, kerosene, spot removers, turpentine, waxes, wax removers or other chemicals. The fumes can cause a fire or explosion. These items must always be washed first by hand in hot water with an extra amount of detergent and then be dried in the open air before drying in the appliance.
  - ▶ Items which contain padding or fillings (e.g. pillows, jackets), as the filling can get out with the risk of igniting in the dryer.
  - ▶ Items which contain a large proportion of rubber, foam rubber (latex foam) or rubber like materials such as shower caps, waterproof textiles, rubberised articles and items of clothing and pillows with foam rubber filling.
- ▶ Do not drink the condensed water.
- ▶ Do not use the appliance without the lint filter or condensor filter in place or with damaged filter.
- ▶ Notice that the last part of the drying cycle occurs without heat (cool down cycle) to ensure remaining the garments at a temperature which does not damage them.
- ▶ Do not leave the appliance unattended during run time for some time. If a long absence is intended, the drying cycle have to be interrupted by switching off the unit and unplugging the mains.
- ▶ Do not switch off the appliance except drying cycle is finished, unless all items are quickly removed and spread out that the heat can be released.
- ▶ Switch off the appliance after each drying programme to save electricity and for safety.

**Maintenance / cleaning**

- ▶ Make sure children are supervised if they carry out cleaning and maintenance.
- ▶ Disconnect the appliance from the electrical supply before undertaking any routine maintenance.



## WARNING!

### Maintenance / cleaning

- ▶ Clean the lint filter and the condenser filter after each programme (see CARE AND CLEANING).
- ▶ Do not use water spray or steam to clean the appliance.
- ▶ Do not use industrial chemicals to clean the appliance.
- ▶ Replace a damaged supply cord only by the manufacturer, its service agent or similarly qualified persons in order to avoid a hazard.
- ▶ Do not try to repair the appliance by yourself. In case of repair please contact our customer service.

### Installation

- ▶ Ensure a location which allows opening the door fully. Do not install the tumble dryer behind a lockable door, a sliding door or a door with hinges on the opposite side of the tumble dryer door as this limits the full opening of the tumble dryer door.
- ▶ Install the appliance in a well-ventilated, dry place.
- ▶ Never install the appliance outdoors in a damp place, or in an area which may be prone to water leaks such as under or near a sink unit. In the event of a water leak cut power supply and allow the machine to dry naturally.
- ▶ Install or use the appliance only where the temperature is above 5 °C.
- ▶ Do not place the appliance directly on a carpet, or close to a wall or furniture.
- ▶ Do not expose the appliance to any frost, heat or direct sunlight or in the near of heat sources(e.g. stoves, heaters).
- ▶ Make sure that the electrical information on the rating plate agrees with the power supply. If it does not, contact an electrician.
- ▶ Do not use multi-plug adapters and extension cables.
- ▶ Make sure not to damage the electric cable and the plug. If damaged have it replaced by an electrician.
- ▶ Use a separate earthed socket for the power supply which is easy accessible after installation. The appliance must be earthed.
- ▶ Only for UK: The appliance's power cable is fitted with 3-cord (grounding) plug that fits a standard 3-cord (grounded) socket. Never cut off or dismount the third pin (grounding). After the appliance is installed, the plug should be accessible.

## Intended use

This appliance is intended for drying items which have been washed in a water solution and are marked on the manufacturer's care label as being suitable for tumble drying.

It is designed exclusively for domestic use inside the house. It is not intended for commercial or industrial use. Changes or modifications to the device are not allowed. Unintended use may cause hazards and loss of all warranty and liability claims.

## Standards and directives

This product meets the requirements of all applicable EC directives with the corresponding harmonised standards, which provide for CE marking.



### Notice

The appliance contains the fluorinated greenhouse gas HFKW-134a (GWP:1430). This gas is hermetically sealed.



### Environmentally responsible use

- ▶ **Thorough drainage:** Spin the laundry with the maximum spin speed.
- ▶ **Maximum load:** Use the maximum filling amount according to the programme table, but do not overload the dryer. To take advantage of the maximum load, the laundry which should be dried „READY to STORE“, can be first dried easily with „READY to IRON“. At the programme end remove the laundry which should be ironed and dry the remaining laundry then to end.
- ▶ **Loosen up the laundry:** Shake out the laundry before putting them into the dryer.
- ▶ **Avoid excess drying:** An excessive drying should be avoided. Select the right programme and the appropriate dry level.
- ▶ **Softener unnecessary:** Do not use softener when washing, because the laundry will become fluffy and soft in the dryer.
- ▶ **Cleaning of the lint filters:** Clean the lint filters after each cycle.
- ▶ **Ventilation:** Make sure the appliance is properly ventilated (see INSTALLATION).
- ▶ **Condensed water reuse:** The collected condensed water can be used for the steam iron. Before it should be poured through a fine sieve or coffee filter paper. Smallest parts will be retained by the filter.

# Product description

GB

This drawing may be slightly different from the layout of the drying machine you have just purchased.

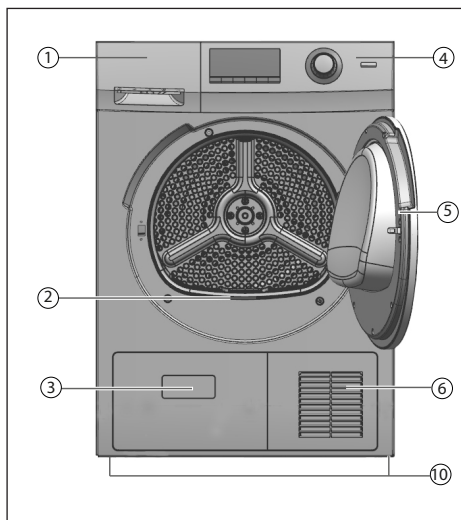


Fig.1: appliance front

- 1 Water tank
- 2 Rating plate
- 3 Service flap
- 4 Control panel
- 5 Door

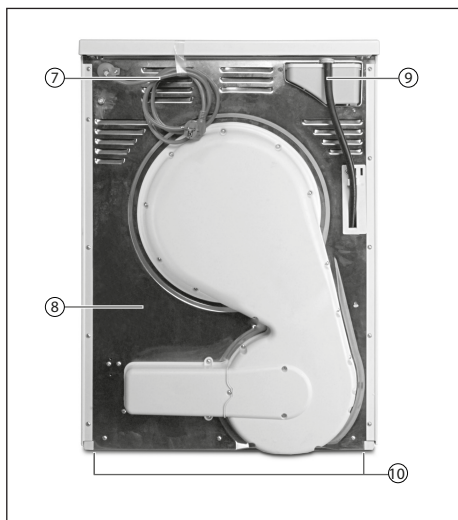


Fig.2: appliance backside

- 6 Ventilation slots
- 7 Power cord
- 8 Back cover
- 9 Drainage outlet
- 10 Adjustable feet

## Accessories

Check the accessories and literature in accordance with this list.:



Fig.3: Accessories



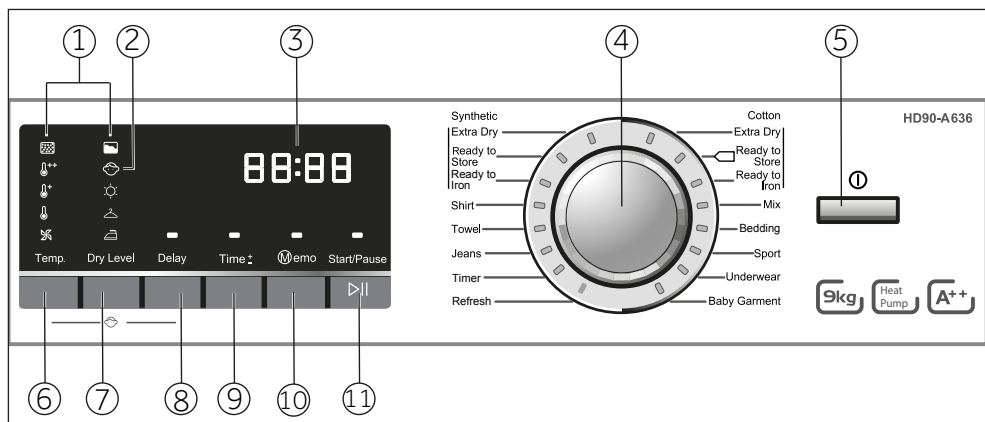


Fig.4: control panel

- |                          |                      |                       |
|--------------------------|----------------------|-----------------------|
| 1 Maintenance indicators | 5 On/Off button      | 9 Time $\pm$ button   |
| 2 Child-lock indicator   | 6 Temperature button | 10 Memo button        |
| 3 Display                | 7 Dry Level button   | 11 Start/Pause button |
| 4 Programme selector     | 8 Delay button       |                       |

## 1-Maintenance indicators

The indicators light up in order to remind that the filter must be cleaned and the water tank must be emptied (see CARE AND CLEANING).

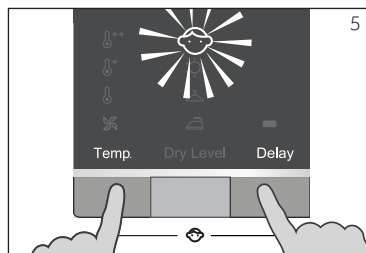
Meaning of icons:

Illuminated LED	Meaning
	Clean the lint filter in the filling opening and the condenser filter in the base.
	Empty the water tank or check it for correct positioning.

## 2-Child lock indicator

This option blocks all panel elements against activation. After starting a programme press simultaneously "Temp"+"Delay" for about 3 seconds (fig. 5); the child lock indicator lights up. For unlocking please press again the two buttons.

The icon flashes if a button will be pressed or the programme selector will be twisted, when the child lock is activated. The change is not running.



## Notice

- ▶ When the cycle ends or the power supply is interrupted, the function will not be cancelled automatically.
- ▶ We recommend to switch on this function if there are children in the household.
- ▶ The On/Off button can be activated during function child lock is selected.



## 3-Display

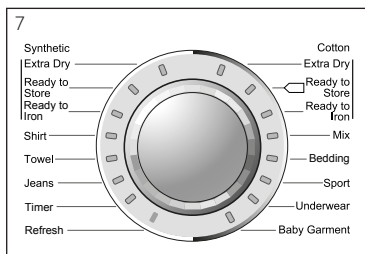
During any selection the display (fig.:6) shows related information like

- ▶ Programme cycle time
- ▶ Programme start delay time
- ▶ Error codes (see TROUBLESHOOTING)

After start of an operation it displays:

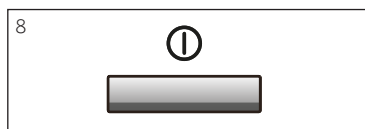
- ▶ Remaining time in hours of a delayed programme starts, e.g. **13:00**
- ▶ Remaining programme cycle time in hours + minutes, e.g. **1:59**

While running it may vary due to local conditions and daily working load.



## 4-Programme selector

By turning the knob one of 16 programmes can be selected (fig. 7). The default settings will be displayed.



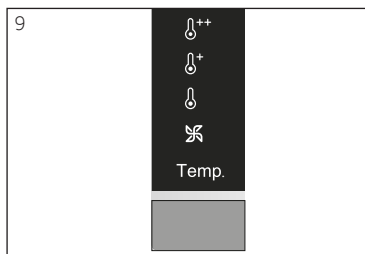
## 5-On/Off button

Press this button to switch on or switch off the appliance (fig. 8).



## Notice

After each switch-on, the appliance suggests the economical programme "Cotton-Ready to store" for drying normal wet cotton laundry.

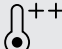
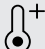




## 6-Temp. button

Touch this button (fig.9) to select the drying temperature of the programme. Press sequentially the Temp. button until the desired symbol flashes on the display.

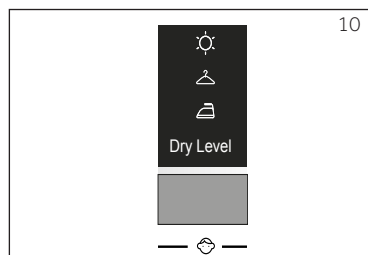
In conjunction with the "Delay" button, the child lock function can be switch on/off(see CHILD LOCK INDICATOR).

Meaning of the symbols:




Illuminated LED	Term	Meaning
	High temperature	For heavy fabrics.
	Middle temperature	For normal fabrics.
	Low temperature	For easy-care fabrics.
	Cool air	For airing of dry, worn cloths.

## 7-Dry Level button

With this button (fig. 10), the desired dryness level can be selected for some programs. Press sequentially the Dry Level button until the desired symbol flashes on the display.



Meaning of the symbols:

Illuminated LED	Dry level	Meaning
	Extra dry	Dry level for thick or multi-layered textiles, which are to be dried out.
	Ready to Store	Dry level for linen, which should not be ironed, and which you want to placed immediately into the cabinet (such as towels, non-iron synthetic fabrics etc.).
	Ready to Iron	Light to medium weight fabric, which should be ironed with the iron/ironing machine.

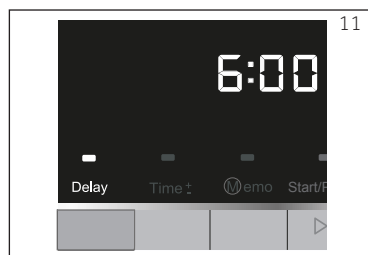
The selected dry level determines the residual moisture content of dried laundry. The lower the desired residual moisture content, the longer the drying time.

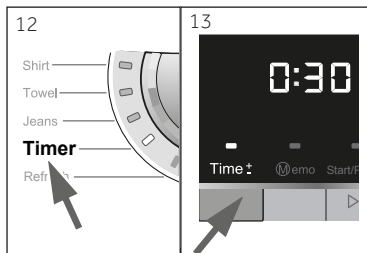
The residual moisture content of dried laundry depends on several factors like e.g loading, textile art, room temperature etc.

## 8-Delay button

Press this button (fig. 11) to start the selected programme with a delay. The delay could be increased in steps of one hours from 1-19h. For example display of 6:00 means start of programme cycle will be in 6 hours. Press "Start/Pause" button to activate the time delay.

In conjunction with the "Temp." button, the child lock function can be switch on/off(see CHILD LOCK INDICATOR).

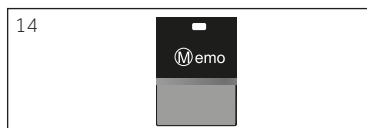




## 9-Time ± button

With this button the programme duration of programme TIMER can be selected.

1. Set programme Timer (fig.12). The default time is 30 min.
2. By pressing the Time ± button (fig.13) the time can be increased or decreased with steps of 10 minutes. The shortest time is 10 min and the longest time is 02h:30 min. The indicator lights up.
3. Start the programme by pressing the „Start/ Pause“ button.



## 10-Memo button

A programme with all of its settings can be saved for reuse by touching this button (fig. 14).

1. Set the programme with all desired functions.
2. Press the button „Memo“ for 2 sec. The indicator lights up.

When you want to use the stored cycle you just only press the „Memo“ button. The indicator lights up and the stored cycle is activated.



## Notice

The "Delay function" can not be memoried.



## 11- Start/Pause button

Press this button gently (fig. 15) to start or interrupt the currently displayed programme. During operation its LED is shining, or if interrupted blinking.

Programme	Max. load <sup>1)</sup> in kg	Laundry	Dry level <sup>2)</sup>			Temperature <sup>3)</sup>			
Cotton	Extra Dry	<b>Cotton</b> Laundry of varying thickness and multi-layered garments, such as bathrobes, however no shirts.	●			●	○	○	
	Ready to Store	<b>Cotton</b> Terry towels, shirts.		●		●	○	○	
	Ready to Iron	<b>Cotton</b> Bed linen, table linen, kitchen towels, which should still be ironed.			●	●	○	○	
	Mix	<b>Mixed loading</b> of textiles made of cotton and synthetics.	○	●	○	○	●	○	
	Bedding <sup>4)</sup>	Bed linen, shets or other voluminous textiles.	●	○	○	○	●	○	
	Sport	Light <b>sportswear</b> , such as track-suits.	○	●	○	○	●	○	
	Underwear	<b>Underwear</b> made of cotton.	○	●	○	○	●	○	
	Baby Garment	<b>Baby garment</b> made of cotton.	○	●	○	○	●	○	
	Refresh	For <b>refreshing</b> (no drying!) of all kind of textiles after air drying.							●
	Timer	All kind of garments (except for wool and silk), which should be individually dried.				○	●	○	○
Synthetic	Jeans	<b>Jeans</b>	●	○	○	●	○	○	
	Towel <sup>4)</sup>	<b>Towels</b> , bathrobes.	●	○	○	●	○	○	
	Shirt <sup>4)</sup>	<b>Shirts</b>	○	●	○	○	●	○	
	Extra Dry	<b>Easy care textiles</b> made of synthetic or mixed fibres (non-iron), e.g. bed and table linen, shirts.	●			○	●	○	
	Ready to Store	<b>Easy care textiles</b> made of synthetic or mixed fibres, e.g. bed and table linen, sweater.		●		○	●	○	
	Ready to Iron	<b>Easy care textiles</b> made of temperature-sensitive textiles which should be ironed.			●	○	●	○	

● = Preset; ○ = Available

<sup>1)</sup> Applied to dry laundry.

<sup>2)</sup> Dry level: Extra Dry, Ready to Store, Ready to Iron.

<sup>3)</sup> Temperature: low temperature, middle temperature, high temperature, cool air.

<sup>4)</sup> This programme has reversing function.

The indicated consumption values may accordingly differ to local conditions.

Programme	Spin speed in rpm *	Restidual moisture in %	Time in h:min	Energy consumption in kWh
Cotton 9 kg				
Extra Dry	1400	approx. 50	4:11	2.10
	1000	approx. 60	4:40	2.34
Ready to Store *	1400	approx. 50	3:45	1.80
	1000	approx. 60	4:29	1.98
Ready to Iron	1400	approx. 50	2:39	1.30
	1000	approx. 60	3:18	1.62
Synthetic/ easy care textiles 4.5 kg				
Extra Dry	1200	approx. 40	2:02	0.88
	800	approx. 50	2:32	1.10
Ready to Store	1200	approx. 40	1:29	0.66
	800	approx. 50	1:47	0.75
Ready to Iron	1200	approx. 40	1:00	0.42
	800	approx. 50	1:20	0.56

\* Standard programme for the energy labelling according to 392/2012 EU: Cotton Ready to Store  
 This programme is suitable for drying normal wet cotton laundry and it is the most efficient programme in terms of energy consumption for cotton The actual energy consumption per cycle depends on the type of use of the appliance.

## Starched laundry

Starched laundry leaves a film of starch in the drum and is not suitable for the dryer.

## Softener

Do not use softener when washing, because the laundry will become soft and fluffy in the dryer.

## Soft care cloths

The use of "soft care cloths" can lead to a coating at the lint filters. This can cause a blockage of the filters. In such cases, we recommend either to abstain from adding soft care cloths or to choose a different brand. In any case note the manufacturer's instructions.

## Small amounts of filling

In a quantity of less than 1.0 kg, the TIMER-programme should be selected because the automatic scanning of the dry level can be captured only still inaccurate.

## Open door

The door should be left ajar during the non-use, so that the door seal indefinitely remains in effect.

## Drum interior light

When the appliance is switched on, always the drum interior light lights when door is open.

## Service flap

Make sure that the service flap is always closed during operation.

## Anti crease protection

If at the end of the programme the laundry is not removed, the drum moves from time to time to prevent creasing. The anti crease protection phase is approx. 60 minutes.

## Laundry which should be ironed

...should be dried with level READY to IRON . This facilitates ironing by hand or using the machine.

## Remaining time

The programme duration is influenced by the following factors: the type of fabric, the filling quantity, absorptive capacity, the desired dry level, as well as the spin speed of the washing machine. These factors are registered by the electronics during the programme and the remaining time will be corrected accordingly.

## AUTO load detection system

When the programme starts, after a few minutes the display will show **AUTO**. This means the automatic load detection is in progress. Sensors are detecting and estimating the selected programme time to finish. Depending on the programme selected, load quantity, humidity and ambient temperature, the AUTO load detection phase can last a few minutes for small load, or up to hour for the maximum load or large items, before displaying the approximate programme time remaining to finish the programme.


## Extra large pieces

... tend to wind up. If therefore the desired dry level could not be reached, loosen up the laundry and dry again with the time programme (TIMER).

## Especially delicate fabrics

Textiles which can easily shrink or lose their shape, as well as e.g. silk stockings, lingerie etc. should not be put in the dryer. Put delicate garments inside a laundry bag and avoid overdrying them.

## Jersey and knitwear

should be dried at READY to IRON  to avoid shrinkage. A subsequent stretch or pull into form should be performed.

## Fluff

The amount of lint in the lint filters is not attributable to the wash stress in the dryer; rather, it is extracted fibers from the wearing and washing. During drying on the line, the fluff will be carried away by the wind. By using a tumble dryer the fluff will be collected in the filters.

## Acoustic signal

An acoustic signal sounds:

- ▶ when the water tank is full
- ▶ in case of failures

Additionally the acoustic signal can also be selected for following cases:

- ▶ at the end of programme
- ▶ when pressing a button
- ▶ when turning the programme selector

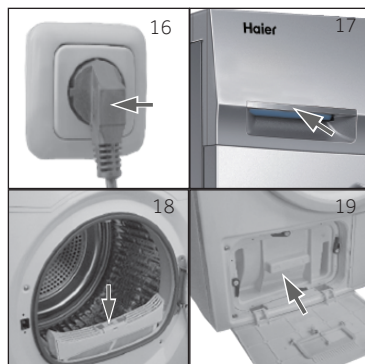
How to activate/deactivate the additionally acoustic signal:

1. Press "on/off" button to switch on the appliance.
2. Simultaneously press button "Time  $\pm$ " and "Memo" for about 3 seconds.



## Preparing the appliance

1. Connect the appliance to a power supply (220V to 240V~/50Hz) (fig. 16) Please refer also to section INSTALLATION.
2. Make sure:
  - ▶ the water tank is empty and properly installed. (fig. 17).
  - ▶ the lint filter is clean and properly installed. (fig. 18).
  - ▶ the condenser filter is clean and properly installed.(fig. 19).



## Preparing the laundry

- ▶ Sort clothes according to fabric(cotton, synthetics, etc.) desired dry level and equal residual moisture (fig. 20).
- ▶ Follow the instructions on the laundry label and dry only machine-dryable garments.



Symbol	Meaning	Symbol	Meaning
	Dry at normal temperature (full power); E.g. for cotton linen		Line drying
	Dry with low temperature; for easy-care linen *		Flat drying
	Do not tumble dry. E.g. wool and textiles containing wool, silk		Drip flat drying
			Iron at 110 °C
			Iron at 150°C
			Iron at 200°C
			Do not iron

\* Reduce temperature .

- ▶ Empty pockets of all sharp or flammable objects (coins, keys, paper tissues, lighters, matches etc.) and remove harder decorative objects (brooches etc.) (fig. 21).




## CAUTION!

Non-textile, as well as small, loose or sharp-edged items may cause malfunctions and damage of clothes and appliance.



## Tips:

- ▶ Separate white clothes from coloured ones.
- ▶ Unfold large items such as bed sheets, table cloths, etc.
- ▶ Bed linen and pillowcases should be buttoned, so that small parts cannot collect inside.
- ▶ Close zippers and hooks, and tie loose belts without metal parts, apron strings etc. together.
- ▶ Place small items such as socks, belts, bras, etc. in a wash bag.
- ▶ Make sure all buttons are sewn on tightly .
- ▶ Sew or remove loose metal parts of garments, such as e.g. metal buttons, bow of bras before inserting. Otherwise such parts can cause noise and damage the drum.
- ▶ Do not over-dry easy-care linen. Risk of the crease. Allow final drying at the air.
- ▶ Knitwear (e.g. T-shirts, underwear) sometimes run up during drying. Only use dry level READY to IRON  and drag in the form afterwards.
- ▶ For pre-dried, multi-layered garments or for final drying the time-programme (TIMER) should be chosen.

## Loading the appliance

- ▶ Loosen up and insert presorted laundry.
- ▶ Don't overload.
- ▶ Close the door carefully. Make sure that no pieces of laundry are pinched.

## Removing and adding laundry



## WARNING!

Never turn the dryer off before the end of the drying cycle unless all items are quickly removed and spread out that the heat can be released.

To remove or add laundry the programme can be interrupted at any time:

- ▶ Open the door. The cycle interrupts.  
Be careful when removing or adding the laundry! The Interior of the drum or the laundry itself may be hot, so that there is danger of burns .
- ▶ To continue the programme, press the "Start/Pause" button after closing the door.

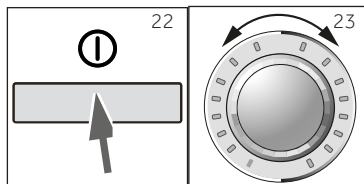
## Switch on the appliance

Press the „on/off“- button to switch on the appliance. (fig.: 22).

## Select a programme

To get the best drying results, select a programme which fits the dry level and sort of laundry type.

Turn the programme knob to select the right programme (fig.: 23). The default settings light up in the display. If there are options available, the option proposed by the appliance will be displayed by a flashing symbol. The display shows the time until the end of the programme.



## Notice

- ▶ After each switch-on, the appliance suggests the economical programme "Cotton-Ready to Store" for drying normal wet cotton laundry.
- ▶ The displayed remaining time is a default value, this time will be re-calculated depending on additional programme settings and the moisture content of the laundry. See SUGGESTIONS AND TIPS.

## Additional settings

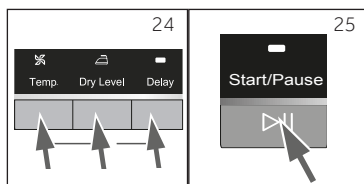
Choose additional settings (fig.: 24); see section CONTROL PANEL.

## Start programme

Press "Start/Pause" button to start (fig.: 25).

The Appliance operates according to present settings. Changes are only possible by cancelling the programme.

After a few minutes the display will show **AUTO** to indicate that AUTO load detection system is working (see section SUGGESTIONS AND TIPS).



## Interrupt/ change/ cancel a programme

To interrupt a running programme press "Start/Pause". The LED of this button is flashing.

Changes or setting a new programme are now possible. Press the button "Start/Pause" again to continue the programme with the new settings.

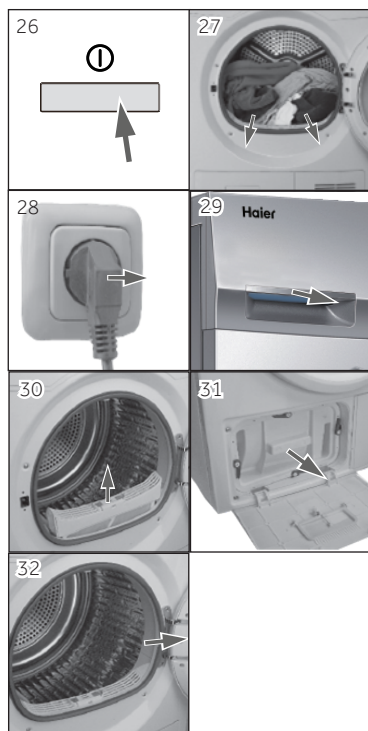
Hold the button „On/Off“ in order to cancel the programme.

## After drying

The tumble dryer stops operation automatically when a dry cycle is complete. The display shows **End**.

### Notice

The last part of the drying cycle occurs without heat (cool down cycle) to ensure remaining the garments at a temperature which does not damage them.



1. Press "On/Off" button to switch off the appliance. (fig.: 26).
2. Remove laundry as soon as possible to go easy on it and to prevent more wrinkling (fig.: 27). If the laundry is not removed the anti-crease programme starts automatically. In anti-crease phase, the drum will rotate 30 sec. in each 5.5 minutes, the total phase time will last for 1 hour.
3. Unplug the power cord (fig.: 28).
4. Empty the water tank (fig.: 29).
5. Clean the lint filter in the filling opening (fig.: 30).
6. Clean the condenser filter (fig.: 31).
7. Open the door to prevent formation of moisture and odours. Let it open while not used (fig.: 32).

## Standby mode / power- saving mode

The switched on appliance will go into standby-mode if it will not be activated within 5 minutes before starting the programme or at the end of programme. This saves energy. To interrupt the standby-mode push the "On/Off button.



## CAUTION!


Following maintenance activities must be carried out **after each drying cycle**.

- ▶ Empty the water tank
- ▶ Clean the lint filter
- ▶ Clean the condenser filter

## Empty the water tank


During operation, steam condenses to water which is collected in the water tank. The tank must be emptied **after each drying cycle**.

If the tank is full:

- ▶ the lamp  will flash during the programme.
- ▶ an acoustic signal will sound.
- ▶ the programme will automatically interrupted; the laundry remains wet.
- ▶ the „Start/Pause“ button must be pressed after the tank was emptied in order to continue the programme.

1. Pull out the water tank from its housing. Hold the tank horizontally (fig.: 33).
2. Empty the water tank into a sink (fig.: 34).
3. Reinstall the water tank to the tumble dryer. (fig.: 35).

The tank can also be emptied during programme. To continue the programme the "Start/Pause" button has to be pressed after the tank has been reinstalled.

The symbol  only switches off after new programme was started.



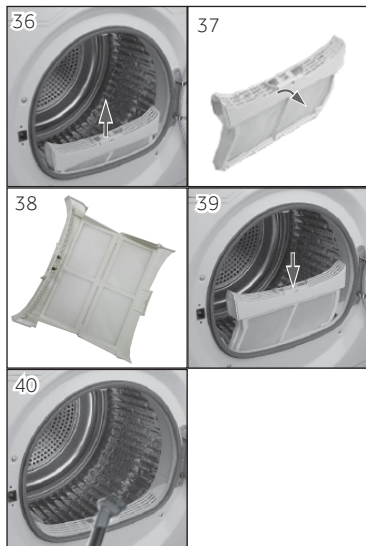
## Notice

The condensed water can also be derived by a drain hose (enclosed or as an optional accessory available at the customer service). The tank needs no longer be emptied (see section ACCESSORY).





## WARNING!

Do not use the water for any kind of drinking or food processing.



## Clean the lint filter

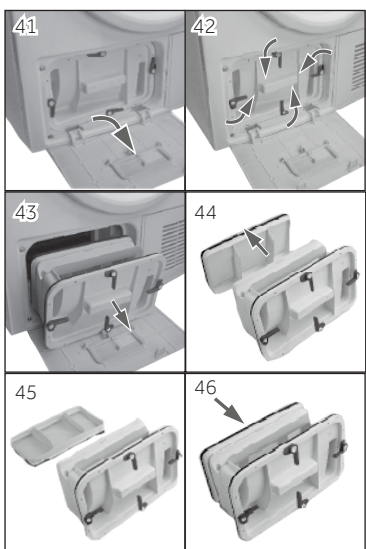
Fiber abrasion results because of wearing and washing the laundry. These fibers (fluff) will be collected during the drying process in the lint filter. The lint filter in the filling opening must be cleaned after each drying cycle to ensure proper air circulation. The shining LED  will remind you.

1. Remove the lint filter from the drum (fig.: 36).
2. Open the lint filter (fig.: 37 and 38) and remove all lint residuals. By using a damp cloth or moistened hand the fluff will be remove easily. Detergent residue may be form coating at the fluff filter. In this case, the filter must be cleaned with warm water and a soft brush.
3. Reinstall the cleaned lint filter in the tumble dryer (fig.: 39). The symbol  only switches off after the appliance was turned off.
4. Occasionally the fluff around the housing of the filter as well as on the seal should be removed (fig.: 40).




## WARNING!

Do not operate the dryer without or with damaged lint or condenser filter.



## Clean the condenser filter

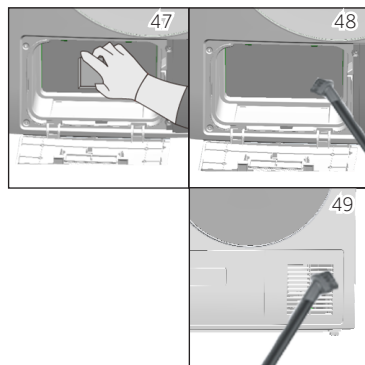
The tumble dryer is equipped with a filter system to protect the heat pump from dirt. This is located in the base of the appliance. Gradually also at this place larger amounts of fluff will be accumulated and may affect the proper function of the appliance. The shining LED  will remind you.

1. Open the Service door (fig.: 41).
2. Open the four levers (fig.: 42).
3. Pull out the condenser filter from its housing (fig.: 43).
4. Remove the rear filter screen (fig.: 44/45).
5. Clean the condenser filter from any residuals with a damp cloth or moistened hand. If the filter is very dirty, it can be cleaned under running water.
6. Reinstall the rear filter to the condenser filter (fig.: 46).
7. To reinstall the condenser filter, follow the above steps 3 to 1 in reverse order.

## Clean the front of the heat exchanger

Approximately all 10 drying cycles the front of the heat exchanger should be cleaned from fluff by using a sponge or vacuum cleaner (fig.: 47/48). Please use household gloves. The fluff can remove easily when they have been sprayed with water previously.

On this occasion the ventilation slots should be vacuumed also (fig.: 49).



## Clean the machine



### WARNING!

Unplug the machine during cleaning and maintenance.

- ▶ Use a soft cloth with soap liquid to clean the machine case and rubber components (fig.: 50).
- ▶ Do not use organic chemicals or corrosive solvents.

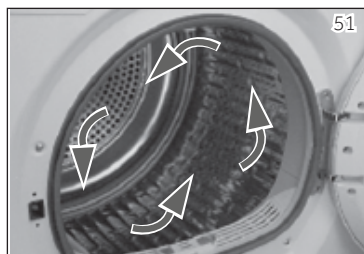


### Notice

During the drying, moisture may accumulate between windows and seal. It does not affect the function of the dryer.

## Clean the drum

- ▶ After some operation time, fabric care agents or calcium contained in the water can form an almost invisible film on the inside of the drum. Use a damp cloth and some detergent to remove it (fig.: 51). Do not use any organic solvent or corrosive agent to avoid damage to the appliance.
- ▶ Remove metal parts such as needles, coins, etc. from the drum which were accidentally dried with the laundry, because it can cause rusting.
- ▶ For removing rust stains, use a non-chloride cleaner. Note the safety instructions of the cleaning agent manufacturer!
- ▶ Do not use any hard objects or steel wool for cleaning.



## Long periods of disuse

If the appliance is not in use for a long time :

1. Empty the tank.
2. Set any programme.
3. Start the programme. The residual water will be pumped into the tank.
4. Stop the programme after some minutes or wait until programme finished automatically. Empty the tank again.
5. Pull out the electrical plug.
6. Open the door to prevent formation of moisture and odours. Let door open while not used.

Before next usage check carefully the power cord.



Many occurring problems could be solved by yourself without specific expertise. In case of a problem please check all shown possibilities and follow below instructions before you contact an after sales service. See CUSTOMER SERVICE.



## WARNING!

- ▶ Before maintenance, deactivate the appliance and disconnect the mains plug from the mains socket.
- ▶ Electrical equipment should be serviced only by qualified electrical experts, because improper repairs can cause considerable consequential damages.
- ▶ A damaged power cable should only be replaced by the manufacturer, its service agent or similarly qualified persons in order to avoid a hazard.

## Information codes

Following codes are displayed only for information referring to the drying cycle. No measures must be performed.

Code	Message
<i>Auto</i>	Automatic load detection is working.
<i>1:25</i>	The remaining programme time will be 1 hour and 25 minutes.
<i>7:00</i>	Delayed start of programme is activated. The start of programme cycle will be in 7 hours.
<i>End</i>	The programme is finished. Switch off the appliance and remove the laundry.

## Troubleshooting with display code

Code	Cause	Solution
<i>EE</i>	Filters are clogged.	Clean filters.
<i>Lo</i>	Ambient temperature is too low.	Only use the dryer at ambient temperatures higher than 5 °C.
<i>F2</i>	Drain pump error.	Contact the customer service.
<i>F4</i>	Temperature of the laundry in the drum does not change.	Contact the customer service.
<i>F5</i>	Communication failure between PCB and display.	Contact the customer service.
<i>F32</i> <i>F33</i>	The condenser thermal sensor is open-circuited or short -circuited.	Contact the customer service.

Should the error codes reappear even after the taken measures, switch off the appliance, disconnect the power supply and contact the customer service.

All other Alarmcodes:

1. Note Alarmcode
2. Contact Service ; refer to CUSTOMER SERVICE.

## Troubleshooting without display-codes

Problem	Possible cause	Possible solution
Tumble dryer fails to operate.	<ul style="list-style-type: none"> <li>• Programme is not yet started?</li> <li>• Delay function is activated?</li> <li>• Door is not properly closed?</li> <li>• Machine has not been switched on?</li> <li>• „Start/Pause“ button was pressed?</li> <li>• Appliance is connected to the power supply?</li> <li>• The water tank is full or not properly installed?</li> <li>• Child lock is activated?</li> </ul>	<ul style="list-style-type: none"> <li>• Check programme and start it.</li> <li>• Cancel the delay start.</li> <li>• Close the door properly.</li> <li>• Switch the machine on.</li> <li>• Press „Start/Pause“ button.</li> <li>• Check power supply.</li> <li>• Empty the water and install it properly; press the „Start/Pause“-button.</li> <li>• Deactivate child lock.</li> </ul>
Appliance fails to operate and the display shows <b>End</b> .	<ul style="list-style-type: none"> <li>• The laundry has reached the dry level defined by the programme?</li> <li>• There is no laundry in the drum?</li> </ul>	<ul style="list-style-type: none"> <li>• Check the programme setting and post-dry if necessary.</li> <li>• Check the drum.</li> </ul>
The drying results are not satisfactory.	<ul style="list-style-type: none"> <li>• The programme setting is not correct?</li> <li>• The correct dry level was chosen?</li> <li>• The filter is dirty?</li> <li>• The condenser filter is dirty?</li> <li>• The heat exchanger is clogged?</li> <li>• The ventilation slots are clogged?</li> <li>• The tumble dryer is overloaded?</li> <li>• There is a coating on the inner surface of the drum?</li> <li>• The laundry was too wet?</li> <li>• Dirt is on the moisture sensor in the drum?</li> <li>• Warm laundry feels more moist than it really is.</li> </ul>	<ul style="list-style-type: none"> <li>• Check the programme setting.</li> <li>• Check the dry level.</li> <li>• Clean the lint filter.</li> <li>• Clean the condenser filter</li> <li>• Clean the heat exchanger.</li> <li>• Clean the ventilation slots.</li> <li>• Reduce the amount of laundry.</li> <li>• Clean the inner surface of the drum with a cloth soaked in vinegar.</li> <li>• Spin the laundry properly before drying.</li> <li>• Clean the front surface of the drum with a cloth soaked in vinegar.</li> <li>• Spread out laundry that the heat can escape.</li> </ul>
Drying time is too long.*	<ul style="list-style-type: none"> <li>• The condenser filter is dirty?</li> <li>• The tumble dryer is overloaded?</li> <li>• The laundry was too wet?</li> <li>• Ambient temperature is too low?</li> </ul>	<ul style="list-style-type: none"> <li>• Clean the condenser filter.</li> <li>• Reduce the amount of laundry.</li> <li>• Spin the laundry properly before drying.</li> <li>• Pay attention to the installation instructions. and increase the ambient temperature, if possible.</li> </ul>

\* The drying cycle is automatically cancelled after 7 hours.

Problem	Possible cause	Possible solution
Drying time is too short.	<ul style="list-style-type: none"> <li>• The load was too small?</li> <li>• The laundry was too dry?</li> </ul>	<ul style="list-style-type: none"> <li>• For single items or small amount of laundry the TIMER programme should be selected.</li> <li>• Select the TIMER programme or a higher dry level.</li> </ul>
Creasing at the laundry.	<ul style="list-style-type: none"> <li>• The tumble dryer is overloaded?</li> <li>• The right programme was selected?</li> </ul>	<ul style="list-style-type: none"> <li>• Reduce the amount of laundry.</li> <li>• Remove laundry immediately after programme end, hang them up and pull them into shape.</li> <li>• Select and adjust the programme according to the fabric type.</li> </ul>
Door does not close.	<ul style="list-style-type: none"> <li>• Laundry is clamped between door and gasket?</li> </ul>	<ul style="list-style-type: none"> <li>• Insert laundry correctly.</li> </ul>
Remaining time on the display stops or skips.	<ul style="list-style-type: none"> <li>• The remaining time will be adjusted continuously based upon the following factors:               <ul style="list-style-type: none"> <li>- Type of laundry.</li> <li>- Loaded amount.</li> <li>- Moisture degree of the laundry.</li> <li>- Ambient temperature.</li> </ul> </li> </ul>	<ul style="list-style-type: none"> <li>• The automatic adjustment is a normal operation.</li> </ul>
The drum interior light does not work.	<ul style="list-style-type: none"> <li>• Appliance is connected to the power supply?</li> <li>• The appliance has been switched on?</li> <li>• The light bulb is still functional?</li> </ul>	<ul style="list-style-type: none"> <li>• Check power supply</li> <li>• Switch the machine on.</li> <li>• Contact the customer service to replace the lamp.</li> </ul>

## In case of power failure

In case of power failure, the current programme is stored only for a short time. Usually, a restart of the programme is required.



### WARNING!

Quickly remove all items and spread them out that the heat can be released.

## Preparation

- ▶ Remove all packaging material. While opening the package, water drops may be seen. This normal phenomenon results from water tests in the factory.
- ▶ Remove all packaging material including the polystyrene base.



### Notice

Dispose of the packaging in an environmentally friendly manner. For information referring current disposal routes, consult your retailer or the local authorities.

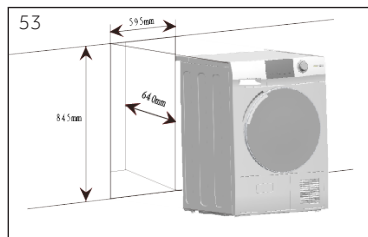
## Transport and waiting time

Transport the appliance in horizontal position only. To the maintenance-free lubrication oil is located in the capsule of the compressor. This oil can get through the closed pipe system during slanting transport. Before connecting the appliance to the power supply you have to wait 2 hours so that the oil runs back into the capsule.



### Aligning the appliance

The appliance should be placed on a flat and solid surface. Set the feet to the desired level (fig.: 52).



### Installation under worktop

1. The dimensions of the recess should at least agree with the dimensions in the figure 53.
2. Put the appliance adjacent to the slot. Make sure that all connections are easily accessible and functional.
3. Adjust accurately all feet to get a firm level position.
4. Install the appliance prudently into the recess.
5. Pay attention to sufficient ventilation.



### Electrical connection

Before each connection check if:

- ▶ power supply, socket and fusing are appropriate to the rating plate.
- ▶ the power socket is earthed and no multi-plug or extension.
- ▶ the power plug and socket are strictly according.
- ▶ **Only UK:** The UK plug meets BS1363A standard

Put the plug into the socket. (fig.: 54).



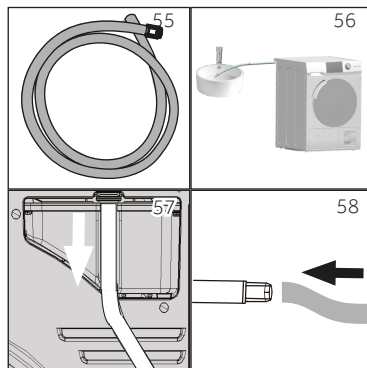
### WARNING!

If the supply cord is damaged, it must be replaced by the service agent (see warranty card) in order to avoid a hazard!

## Connection of a drain hose

With the drain hose (included or optional available at the customer service; fig.:55) the condensed water can be redirected to the drain (sink, trap or gully; fig.:56). The draining of the water tank is eliminated. Nevertheless the tank must be installed in the control panel correctly.

1. Draw the drainpipe from the joint at the back of the appliance (fig.:57).
2. Connect the accessory drain hose to the disconnected drainpipe. Make sure both tubes are firmly fixed (fig.:58).
3. The outlet of the drain hose must not be higher than 1.0 m above the floor. If necessary the hose can be shortened.
4. Secure the drain hose against slipping.



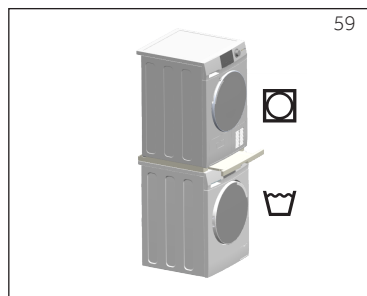
### CAUTION!

- ▶ Use only the accessory hose set for the connection.
- ▶ The drain hose is never to be crushed, kinked, or twisted.
- ▶ The drain hose is not to be extended.
- ▶ Secure the drain hose against slipping. Otherwise the hose can slide off and running condensed water may cause damage.

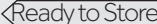
## Wash-dryer stack

The arrangement to a space saving wash-dryer stack is possible (fig.:59). Not every washing machine is suitable for this purpose. Information, as well as the corresponding mounting kit are available via your local dealer.

The mounting instructions supplied with the kit carefully inform about the installation steps.



## Productfiche (acc. to EU 392/2012)

Trade mark	Haier
Model identifier	HD90-A636
Rated capacity (kg)	9
Kind of tumble drier	Condenser
Energy efficiency class	A++
Weighted Annual Energy Consumption (AE <sub>c</sub> in kWh/year) <sup>1)</sup>	236
Tumble dryer with or without automatic	with automatic
Energy consumption of the standard cotton programme <sup>3)</sup> at full load (kWh/cycle)	1.98
Energy consumption of the standard cotton programme <sup>3)</sup> at partial load (kWh/cycle)	1.17
Power consumption of the off-mode (W)	0.1
Power consumption of the left-on mode (W)	1.19
Duration of the „left-on mode“ (min) <sup>2)</sup>	40
Standard drying programme <sup>3)</sup>	Cotton 
Weighted programme time of the standard drying programme <sup>3)</sup> at full and partial load (min)	208
Programme time of the standard cotton programme <sup>3)</sup> at full load (min)	269
Programme time of the standard cotton programme <sup>3)</sup> at partial load (min)	162
Condensation efficiency class <sup>4)</sup>	B
Weighted condensation efficiency for the standard cotton programme <sup>3)</sup> at full and partial load (%)	80
Average condensation efficiency of the standard cotton programme <sup>3)</sup> at full load	80
Average condensation efficiency of the standard cotton programme <sup>3)</sup> at partial load	80
Weighted sound power level of the standard cotton programme <sup>3)</sup> at full load (dB)	67
Built-in or freestanding	Freestanding/ built under

<sup>1)</sup> Based on 160 drying cycles of the standard cotton programme at full and partial load, and the consumption of the low-power modes. Actual energy consumption per cycle will depend on how the appliance is used.

<sup>2)</sup> In case there is a power management system.

<sup>3)</sup> This programme used at full and partial load is the standard drying programme to which the information in the label and the fiche relates to. This is the programme suitable for drying normal wet cotton laundry and it is the most efficient programme in terms of energy consumption for cotton.

<sup>4)</sup> Class G is the least efficient and Class A is the most efficient.

**Additional data**

Dimensions - HxDxW in mm	845 x 650 x 595
Power supply (refer to rating plate) - voltage / current / input	220-240 V~50 Hz/ 2.4A/ 550 W
Permissible ambient temperature	5°C to 35°C
Fluorinated greenhouse gas	HFKW-134a
Volume	0.42 kg
GWP	1430
Tonne(s) of CO <sub>2</sub> equivalent	0.6

We recommend our Haier Customer Service and the use of original spare parts.  
If you have a problem with your appliance, please first check section TROUBLESHOOTING.

If you cannot find a solution there, please contact

- ▶ your local dealer or
- ▶ the Service & Support area at [www.haier.com](http://www.haier.com) where you can find telephone numbers and FAQs and where you can activate the service claim.

To contact our Service, ensure that you have the following data available.  
The information can be found on the rating plate.

Model \_\_\_\_\_ Serial No. \_\_\_\_\_

Also check the Warranty Card supplied with the product in case of warranty.

For general business enquiries please find below our addresses in Europe:

European Haier addresses			
Country*	Postal address	Country*	Postal address
<b>Italy</b>	Haier Europe Trading SRL Via De Cristoforis, 12 21100 Verese ITALY	<b>France</b>	Haier France SAS 3-5 rue des Gravier 92200 Neuilly sur Seine FRANCE
<b>Spain Portugal</b>	Haier Iberia SL Pg. Garcia Faria, 49-51 08019 Barcelona SPAIN	<b>Belgium-FR Belgium-NL Netherlands Luxembourg</b>	Haier Benelux SA Anderlecht Route de Lennik 451 BELGIUM
<b>Germany Austria</b>	Haier Deutschland GmbH Hewlett-Packard-Str. 4 D-61352 Bad Homburg GERMANY	<b>Polska Czechia Hungary Greece Romania Russia</b>	Haier Poland Sp. zo.o. Al. Jerozolimskie 181B 02-222 Warszawa POLAND
<b>United Kingdom</b>	Haier Appliances UK Co.Ltd. One Crown Square Church Street East Woking, Surrey, GU21 6HR UK		

\*For more information please refer to [www.haier.com](http://www.haier.com)





**Haier**