



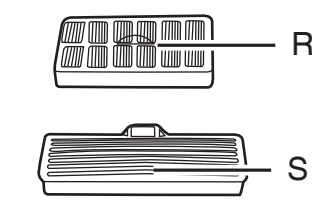
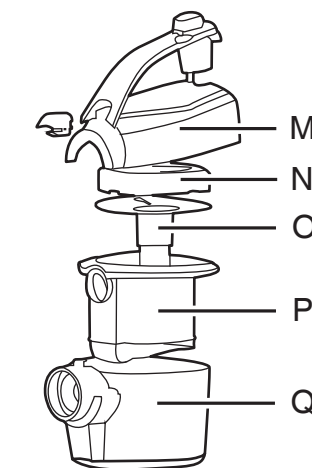
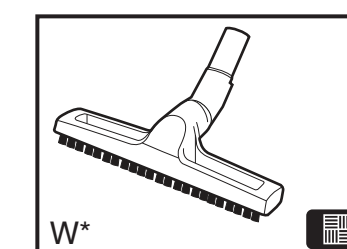
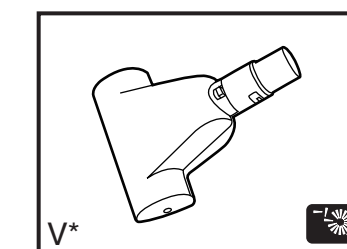
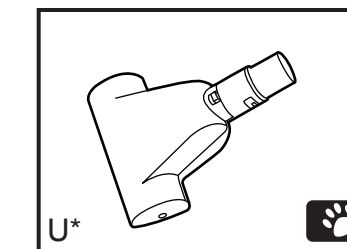
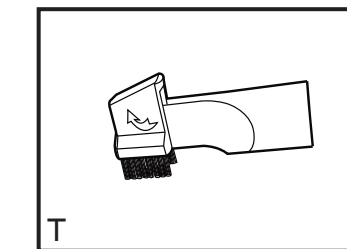
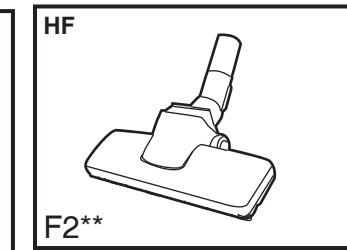
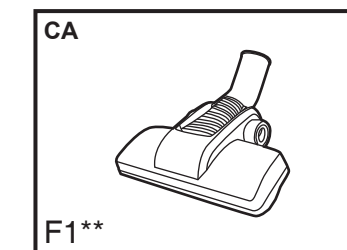
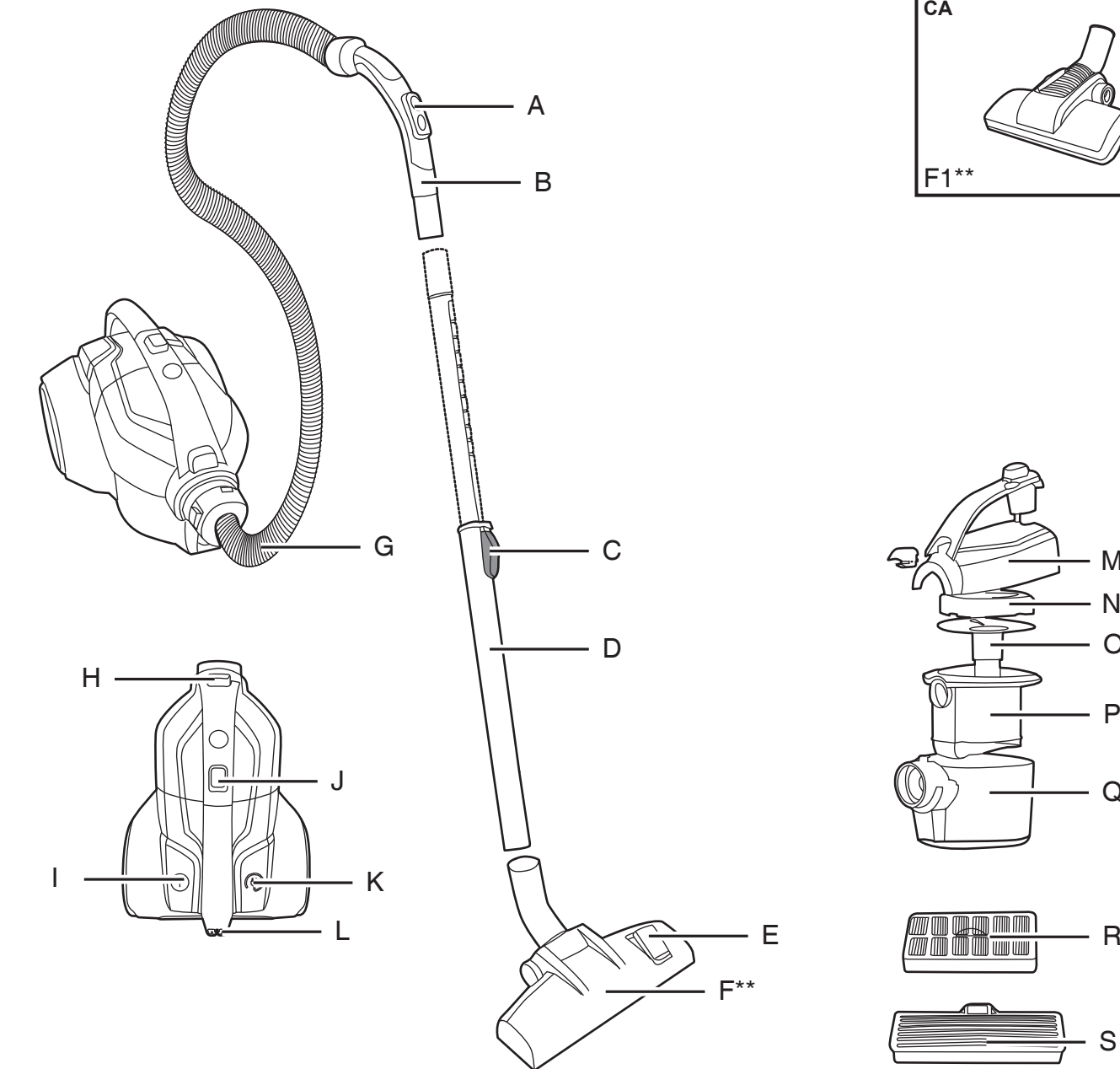
HOOVER



USER MANUAL

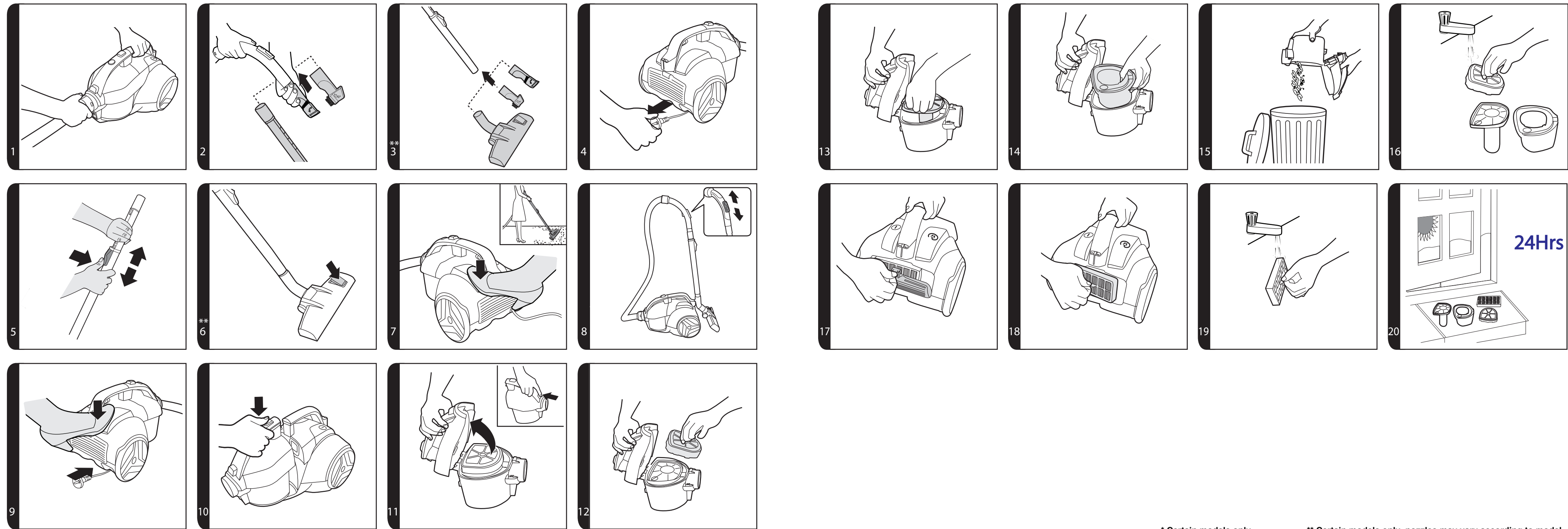


PRINTED IN P.R.C.
48021242/01



* Certain models only

** Certain models only, nozzles may vary according to model



* Certain models only

** Certain models only, nozzles may vary according to model

INSTRUCTIONS FOR SAFE USE

This appliance should only be used for domestic cleaning, as described in this user guide. Please ensure that this guide is fully understood before operating the appliance.

Do not leave the appliance plugged in. Always switch off and remove the plug from the socket after use, or before cleaning the appliance or any maintenance task.

This appliance can be used by children aged from 8 years and above and persons with reduced physical, sensory or mental capabilities or lack of experience and knowledge if they have been given supervision or instruction concerning use of the appliance in a safe way and understand the hazards involved. Children shall not play with the appliance. Cleaning and user maintenance shall not be made by children without supervision.

If the power cord is damaged stop using the appliance immediately. To avoid a safety hazard, an authorised HOOVER service engineer must replace the power cord.

Keep hands, feet, loose clothing and hair away from rotating brushes.

Use only attachments, consumables or spares recommended or supplied by HOOVER.

Static electricity: Some carpets can cause a small build up of static electricity. Any static discharge is not hazardous to health.

Do not use your appliance out of doors or on any wet surface or for wet pick up.

Do not pick up hard or sharp objects, matches, hot ashes, cigarette ends or other similar items.

Do not spray with or pick up flammable liquids, cleaning fluids, aerosols or their vapours.

Do not run over the power cord when using your appliance or remove the plug by pulling on the power cord.

Do not continue to use your appliance if it appears faulty.


HOOVER service: To ensure the continued safe and efficient operation of this appliance we recommend that any servicing or repairs are only carried out by an authorised HOOVER service engineer.

Do not stand on or wrap the cord around arms or legs when using your appliance.

Do not use the appliance to clean animals or people.

Do not position the appliance above you when cleaning the stairs.

The Environment

The symbol on this appliance indicates that this appliance may not be treated as household waste. Instead it must be handed over to the applicable collection point for the recycling of electrical and electronic equipment. Disposal must be carried out in accordance with local environmental regulations for waste disposal.  For more detailed information about treatment, recovery and recycling of this appliance, please contact your local city office, your household and waste disposal service or the shop where you purchased the appliance.

CE This product complies with the European Directives 2014/35/EU, 2014/30/EU and 2011/65/EU.

CANDY HOOVER GROUP S.r.l. Via Privata Eden Fumagalli, 20861 Brugherio (MB) Italy

GETTING TO KNOW YOUR CLEANER

- A. Suction Regulator
- B. Hose Handle
- C. Telescopic Tube Adjuster
- D. Telescopic Tube
- E. Floor Type Selector Pedal
- F. Carpet & Floor Nozzle (GP)**
 - F1. Carpet Nozzle (CA)**
 - F2. Hard Floor Nozzle (HF)**
- G. Hose
- H. Dust Container Lid Release Button
- I. On/Off Pedal
- J. Dust Container Release Button
- K. Cord Reel Pedal
- L. Parking Slot
- M. Dust Container Lid
- N. Pre-Motor Filter
- O. Vortex Finder
- P. Cyclone Body
- Q. Dust Container
- R. Exhaust Filter
- S. Exhaust Filter Cover
- T. 2 in 1 Accessory
- U. Pet Hair Remover Mini Turbo Nozzle*
- V. Allergen Remover Mini Turbo Nozzle*
- W. Parquet Nozzle*

ASSEMBLING YOUR CLEANER

Remove all components from the packaging.

1. Connect the hose to the cleaner main body, ensuring it clips and locks into position. [1]
2. To release: simply press the two release buttons on the hose end and pull. [1]
3. Connect the hose handle to the upper extension tube end, or accessories if required. [2]
4. Connect the extension tube lower end to the carpet and floor nozzle**, or accessories if required. [3]

USING YOUR CLEANER

1. Extract power cord and plug it into the power supply. Do not pull the cord beyond the red marker. [4]
2. Adjust the telescopic tube to the desired height by moving the telescopic tube adjuster up and raise or lower the handle to the most comfortable cleaning position. [5]
3. Carpet & Floor Nozzle**. Press the floor type selector on the nozzle to select the ideal cleaning mode for the floor type. [6]
 - Hard Floor** – Brushes are lowered to protect the floor.
 - Carpet** – Brushes are raised for the deepest clean.
4. Switch the cleaner on by pressing the on/off pedal on the cleaner main body. [7]
5. Adjust the suction regulator on the handle to the desired level. [8]
6. Switch off at the end of use by pressing the on/off pedal. Unplug and press the cord reel pedal to retract the power cord back into the cleaner. [9]

PARKING AND STORAGE SECTION

The tube and nozzle can be parked on the back of the cleaner for storage or temporary storage while in use. [8]

ACCESSORIES

To obtain the best performance and efficiency it is recommended that the correct nozzles are used for the main cleaning operations. These nozzles are indicated in the diagrams by the letters **GP**, **HF** or **CA**.

A nozzle type **GP** can be used to clean both carpet and hard floor.

A nozzle type **HF** is suitable for use only on hard floor.

A nozzle type **CA** is suitable for use only on carpet.

The other nozzles are accessories for specialist cleaning tasks and are recommended for occasional use only.

I

All accessories can be fitted to the end of the hose handle or the end of the telescopic tube.

2 in 1 Tool [T] combines several functions into one tool:

Crevice Tool – For corners and hard to reach areas.

Dusting Brush – For bookshelves, frames, keyboards and other delicate areas.

Parquet Nozzle* [W] – For parquet floors and other delicate floors.

Pet Hair Remover Mini Turbo Nozzle* [U]– Use the mini turbo nozzle on stairs or for deep cleaning on textile surfaces and other hard to clean areas. Particularly suitable for pet hairs removal.

Allergen Remover Mini Turbo Nozzle* [V] – Use the mini turbo nozzle on stairs or for deep cleaning on textile surfaces and other hard to clean areas, particularly suitable for allergen removal.

IMPORTANT: Do not use mini turbo nozzles on rugs with long fringes, animal hides and carpet pile deeper than 15mm. **Do not keep the nozzle stationary while brush is rotating.**

CLEANER MAINTENANCE

Emptying the Dust Container

When the dust reaches the max level indicator on the container, empty the dust container.

IMPORTANT: To maintain optimum performance, do not allow the dust to exceed the max level.

1. Turn off the cleaner with the main switch and unplug the power cable. [9]
2. Press the container release button and remove the container assembly from the cleaner. [10]
3. Hold the dust container with one hand, and push the dust container lid release button, open the container lid. [11]
4. Remove the pre-motor filter assembly from the container. [12] And then remove the vortex finder from the cyclone body. [13]
5. Remove the cyclone body from the dust container. [14] Then empty the dust container. [15]
6. Reassemble the parts back into the dust container ensuring firstly they are clear of any dirt and debris .
7. Close the dust container lid and refit to the cleaner main body.

Cleaning the Washable Filters

The cleaner is fitted with pre motor filter and exhaust filter. To maintain optimum cleaning performance, regularly remove the filters and tap against the side of the bin to release dust. The filters should be washed every 5 cassette empties or when the filter has excessive dust level.

IMPORTANT: All bagless cleaners require regular filter cleaning. Failure to clean your filters may result in air blockage, overheating and product failure. This may invalidate your guarantee.

IMPORTANT: Regularly check and maintain the filters.

IMPORTANT: Always ensure the filter pack is fully dry before use.

***Certain Models Only ** Certain models only, nozzles may vary according to model**

To access the pre motor filter:

1. Remove the dust container from the cleaner. [10]
2. Hold the dust container with one hand and with the other hand press the dust container lid release button to open the container lid. [11]
3. Remove the pre-motor filter assembly from container. [12]
4. Gently tap and wash the pre-motor filter. Do not use hot water or detergents. Remove excess water from the filter and leave to dry fully before re-using. [16,20]
5. Reassemble the pre-motor filter assembly once fully dry and refit to the cleaner. [14]

To access the exhaust filter:

1. Unclip the exhaust filter cover from the rear of the cleaner main body. [17]
2. Remove the exhaust filter from the rear of the cleaner. [18]
3. Gently tap and wash the filter using warm water. Do not use hot water or detergents. Remove excess water from the filter and leave to dry fully before re-using. [19, 20]
4. Refit the exhaust filter to the rear of the cleaner once fully dry and refit the exhaust filter cover. [18,17]

IMPORTANT: Do not use the product without the filter pack fitted.

Cleaning the dust container / separation unit

This cleaner uses a separation system unique to Hoover. If necessary the separation unit can be disassembled from the dust container and cleaned.

1. Press the dust container release button and remove the container assembly from the cleaner. [10]
2. Hold the container with one hand and with the other hand press the dust container lid release button to open the container lid. [11]
3. Remove the pre-motor filter from dust container.[12] And then remove the vortex finder from the cyclone body. [13]
4. Remove the cyclone body from the dust container. [14]
5. If necessary, use a cloth to remove excessive dust from the vortex finder surface and the cyclone body surface.
6. Place the dust container under the tap. Rinse with lukewarm water. Wash internal surfaces of the dust container with water only.[16] DO NOT use soap detergents to wash the internals of the dust container.
7. Reassemble the internal components to the dust container, ensuring all components are dry.
8. Close over the dust container lid and refit dust container assembly to cleaner.

Removing a blockage

1. Check if the Dust Container is full. If so, refer to 'Emptying The Dust Container'.
2. If the Dust Container is empty, but suction is still low:
 - A. Do the filters need cleaning? If so refer to 'Cleaning the washable filters'.
 - B. Check if there is any other blockage in the system - Use a rod or pole to remove any blockage from the extension tube or flexible hose.
 - C. Check if pre-motor filter is fitted.
 - D. Check if the separation unit needs to be cleaned. Refer to 'Cleaning the separation unit'.

WARNING - If the cleaner is used for a significant period of time with a blockage, a thermal cut out will switch the cleaner off to prevent overheating. If this should happen, switch the cleaner off, unplug and correct the fault. It will take about 45 minutes for the cut out to automatically reset.

USER CHECK LIST

Should you have a problem with the product, complete this simple user checklist before calling your local Hoover service.

- Is there a working electricity supply to the cleaner?
Please check with another electrical appliance.
- Is the dust container over-filled? Please refer to 'Cleaner Maintenance'.
- Is the filter blocked? Please refer to 'Cleaner Maintenance'.
- Is the hose or nozzle blocked? Please refer to 'Removing a blockage from the system'.
- Has the cleaner overheated? If so, it will take approximately 30 minutes to automatically reset.

IMPORTANT INFORMATION

Hoover spares and Consumables

Always replace parts with genuine Hoover spares. These are available from your local Hoover dealer or direct from Hoover. When ordering parts always quote your model number.

Hoover Service

Should you require service, spares and consumables at any time, please contact your local Hoover Service Office.

Quality

Hoover's factories have been independently assessed for quality. Our products are made using a quality system which meets the requirements of ISO 9001.

Your Guarantee

The guarantee conditions for this appliance are as defined by our representative in the country in which it is sold. Details regarding these conditions can be obtained from the dealer from whom the appliance was purchased. The bill of sale or receipt must be produced when making any claim under the terms of this guarantee.

Subject to change without notice.