



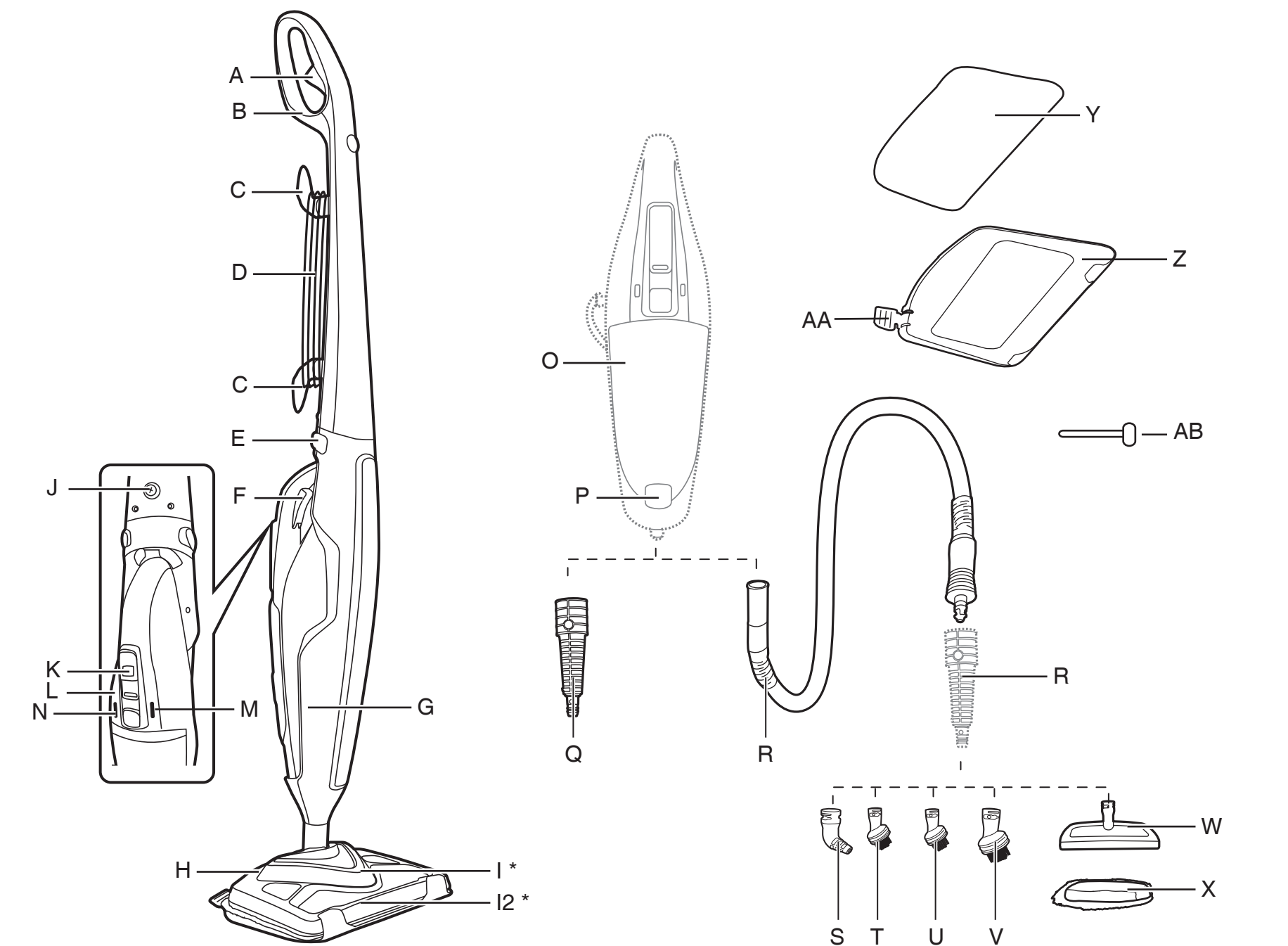
HOOVER



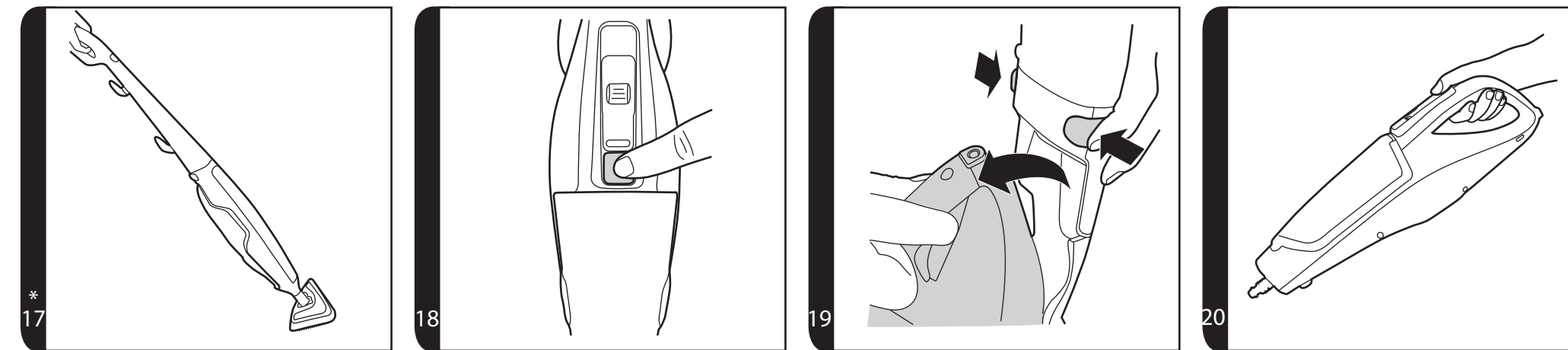
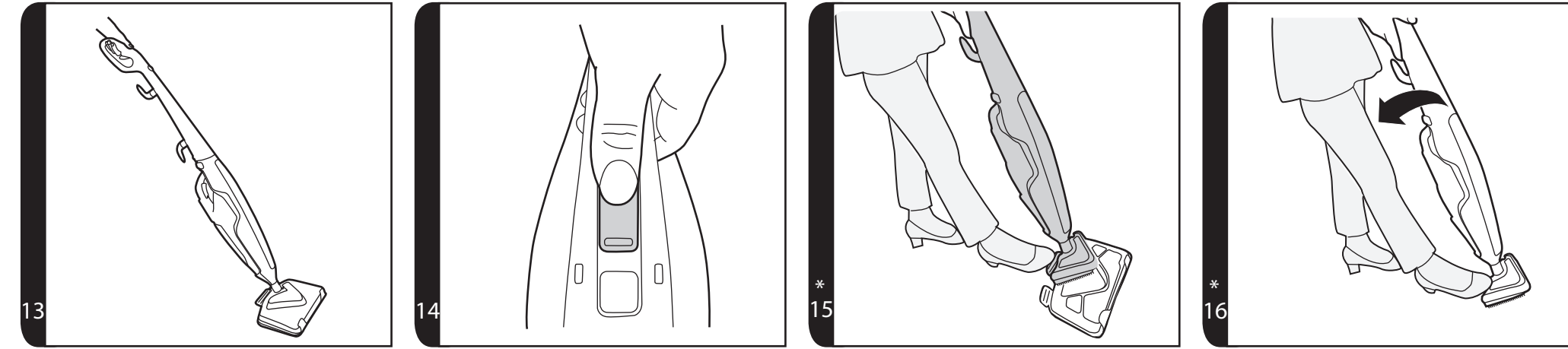
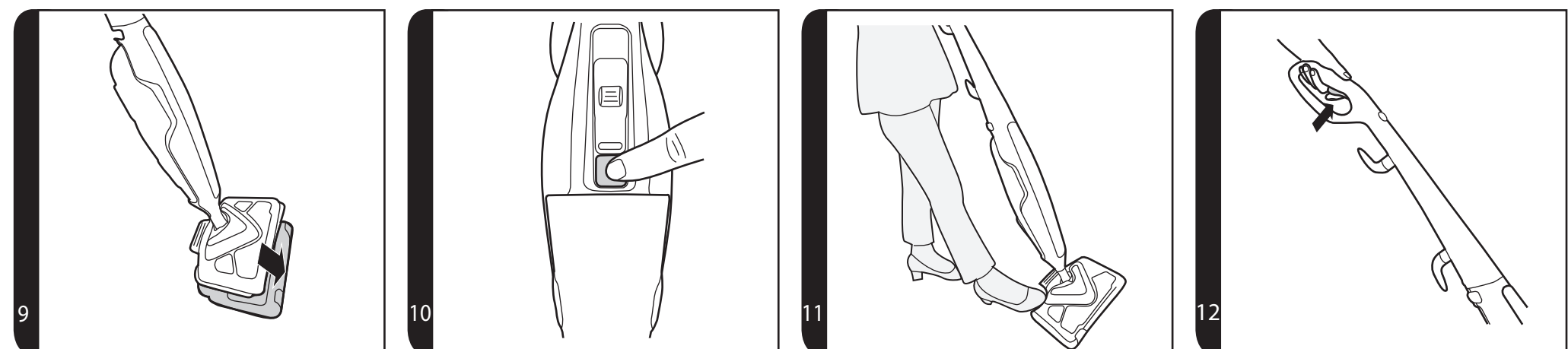
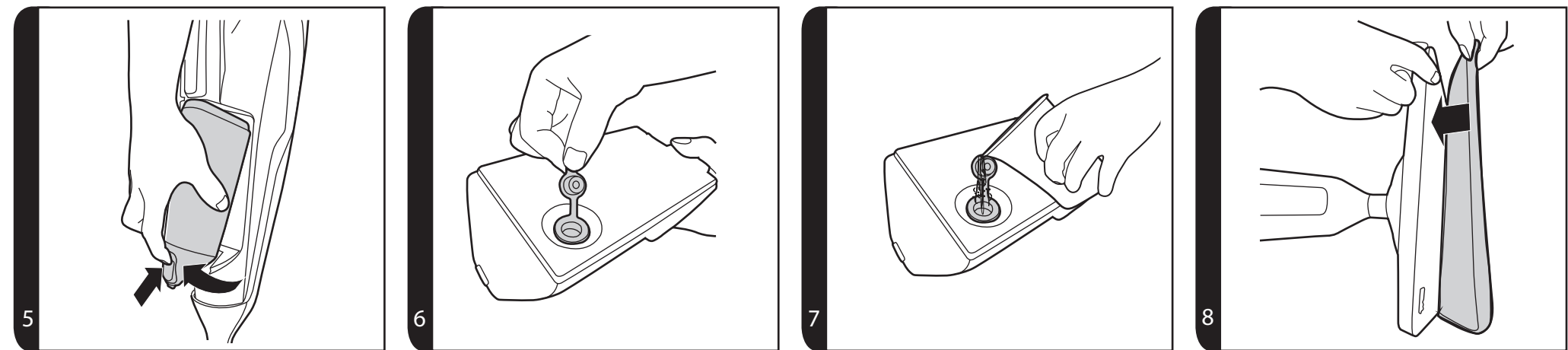
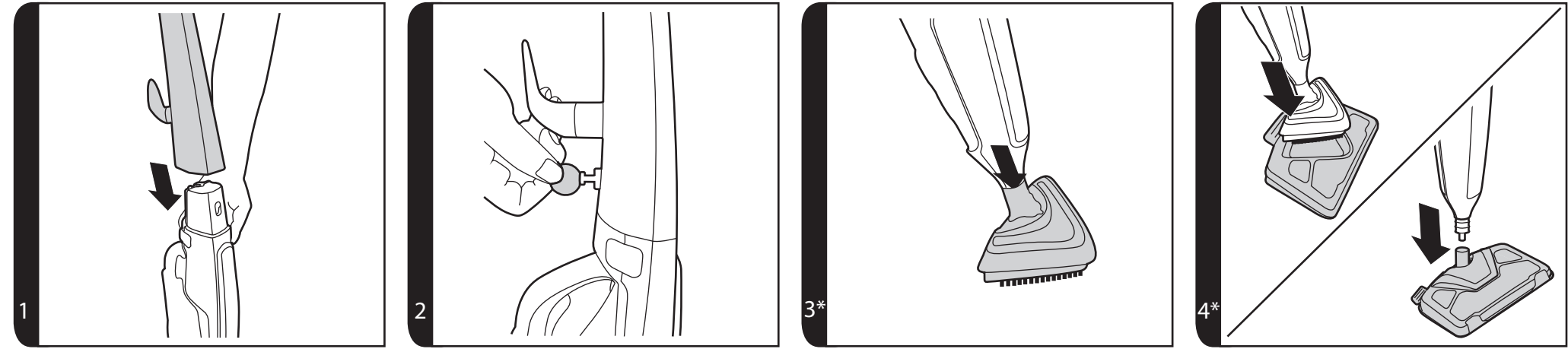
PRINTED IN P.R.C.
48030389



USER MANUAL



*Certain Models Only



*Certain Models Only

INSTRUCTIONS FOR SAFE USE

This appliance should only be used for domestic cleaning, as described in this user guide. Please ensure that this guide is fully understood before operating the appliance.

Do not leave the appliance plugged in. Always switch off and remove the plug from the socket after use, or before cleaning the appliance or any maintenance task.

This appliance can be used by persons with reduced physical, sensory or mental capabilities or lack of experience and knowledge if they have been given supervision or instruction concerning use of the appliance in a safe way and understand the hazards involved. Children shall not play with the appliance.

Keep the appliance out of reach of children when it is energized or cooling down.

The appliance is not to be used if it has been dropped, if there are visible signs of damage or if it is leaking.

If the power cord is damaged stop using the appliance immediately. To avoid a safety hazard, an authorised Hoover service engineer must replace the power cord.

This appliance must be earthed.

The appliance shall not be left unattended while it is connected to the supply mains.

Do not use your appliance out of doors.

Use only attachments, consumables or spares recommended or supplied by Hoover.

Do not use the appliance to clean or direct steam towards animals, people or plants.

Liquid or steam must not be directed towards equipment containing electrical components, such as the interior of ovens.

Unplug the cleaner and switch off before filling the water container. Do not fill over the MAX mark.

The filling aperture must not be opened during use.



Danger of Scalding.



Surfaces are liable to get very hot during use. Avoid contact with steam.

Do not stand on or wrap the cord around arms or legs when using your appliance.

Do not position the appliance above you when cleaning the stairs.

When using the cleaning tools ensure to always steady the appliance with your other hand. This will ensure that the appliance does not fall while in use.

Do not handle the plug or appliance with wet hands.

Do not run over the power cord when using your appliance or remove the plug by pulling on the power cord.

Do not continue to use your appliance if it appears faulty.

Hoover service: To ensure the continued safe and efficient operation of this appliance we recommend that any servicing or repairs are only carried out by an authorised Hoover service engineer.

Do not immerse the appliance in water or other liquids.

Do not use detergents or liquids other than water inside the appliance.

For UK and Ireland only: This appliance has a 13 amp mains plug. If you need to change the fuse in the mains plug, use a 13amp ASTA (BS1362) fuse.

The Environment

The symbol on this appliance indicates that this appliance may not be treated as household waste. Instead it must be handed over to the applicable collection point for the recycling of electrical and electronic equipment. Disposal must be carried out in accordance with local environmental regulations for waste disposal. For more detailed information about treatment, recovery and recycling of this appliance, please contact your local city office, your household and waste disposal service or the shop where you purchased the appliance.



This appliance complies with the European Directives 2014/35/EU, 2014/30/EU and 2011/65/EU.

CANDY HOOVER GROUP Srl Via Privata Eden Fumagalli, 20861 Brugherio (MB) Italy

GETTING TO KNOW YOUR CLEANER

- A. Steam Release Trigger
- B. Handle Assembly
- C. Upper&Lower Cord Storage Hooks
- D. Power Cord
- E. Handheld Release Button
- F. Handheld Steam Release Trigger
- G. Cleaner Main Body
- H. Triangular Brush Release Pedal
- I. Triangular Brush
- I2 Floor Head
- J. Handle Fix Location
- K. Variable Steam Release Control Slider Low, Medium & High
- L. Power On Indicator Light (Red)
- M. Steam Ready Light (Green)
- N. Power On /Off Button
- O. Clean Water Tank
- P. Clean Water Tank Release Button
- Q. Conic Tool
- R. Hose
- S. Curved Nozzle
- T. Round Brush
- U. Small Metal Brush
- V. Big Metal Brush
- W. Window Squeegee
- X. Small Cloth
- Y. Textile Pad
- Z. Carpet Glider
- AA. Carpet Glider Release Pedal
- AB. Bolt

ASSEMBLING YOUR CLEANER

Remove all components from the packaging.

1. Line up the ergonomic handle to the main body of the cleaner and fix in position with the supplied Bolt. [1,2]
2. Assemble the main body of the cleaner to the Triangular Brush*. [3]
3. Assemble the main body of the cleaner to the floor Head or assemble the Triangular Brush into the Floor Head*. [4]

*Certain Models Only

USING YOUR CLEANER

BEFORE YOU BEGIN CLEANING

1. Release the clean water tank by sliding the water release button upwards and remove tank from cleaner main body. [5]
2. Pull the cap on the Water Tank to open. [6]
3. Fill the clean water tank with cold tap water. Replace cap [7] and refit water tank. Do not add any chemicals, detergents or perfumes to the clean water tank.

NOTE: In order to significantly reduce mineral build-up and prolong the life of your steam mop the use of distilled or de-mineralized water in the unit is highly recommended.

4. Attach a Textile Pad to the base of the Floor Head. [8]

IMPORTANT: Always unplug the cleaner when adding water or changing a Textile Pad.

NOTE: Wash the Textile Pad prior to use to remove any lint.

STEAM CLEANING HARD FLOORS

NOTE: Always sweep or vacuum the floor prior to use to remove any loose dirt or debris.

IMPORTANT: Do not use the cleaner without a Textile Pad attached to the Floor Head.

NOTE: Do not use the Carpet Glider when cleaning hard floors.

1. Plug the steam cleaner into the main power. Press the power on/off button, the power on light (red) will illuminate.
2. After a few seconds the steam ready light (green) will illuminate indicating the cleaner is ready for use.
3. Recline the cleaner by placing a foot on the floor head and lowering the main body towards the floor. [11]
4. To produce steam press the Steam Release Trigger. [12]
5. Move the cleaner slowly backwards and forwards paying particular attention to high traffic areas. [13]
6. Variable steam release control is used to select Low, Medium or High intensity of steam, depending on your specific cleaning requirement. [14]

Steam cleaning hard floor - intensive clean

Use the triangular floor brush* for hard floors that require deep cleaning. Please note that there is no mop and the area will have to be dried separately.

NOTE: Always sweep or vacuum the floor prior to use to remove any loose dirt or debris.

1. Remove the triangular floor brush* from the floor head by pressing the release pedal at the rear of the floor head. [15]
2. Plug the steam cleaner into the main power. The power on light (red) will illuminate. After a few seconds the green Steam Ready light will illuminate indicating the cleaner is ready for use.
3. Recline the cleaner by placing a foot on the floor brush and lowering the main body

towards the floor. [16]

4. To produce steam press the steam release trigger. [12]
5. Variable steam release control is used to select Low, Medium or High intensity of steam, depending on your specific cleaning requirement. [14]
6. Move the cleaner slowly backwards and forwards paying particular attention to high traffic areas. [17]

METHODS OF USE FOR HANDHELD STEAM CLEANER

1. Unplug the cleaner from the mains power and ensure the unit has cooled.
2. Push the release button on the main body to take out the handheld. [19]
3. Pull the cap on the Water Tank to open. [6]
4. Fill the clean water tank with cold tap water. Replace cap [7] and refit water tank. Do not add any chemicals, detergents or perfumes to the clean water tank.
5. Plug the steam cleaner into the main power. Press the power on/off button, the power on light (red) will illuminate.[18]
6. After a few seconds the steam ready light (green) will illuminate indicating the cleaner is ready for use.
7. To produce steam press handheld steam release trigger. [20]
8. Variable steam release control is used to select Low, Medium or High intensity of steam, depending on your specific cleaning requirement. [14]

NOTE: in order to significantly reduce mineral build-up and prolong the life of your steam mop the use of distilled or de-mineralized water in the unit is highly recommended.

IMPORTANT: Always unplug the cleaner when removing the Floor Head or handle. Always ensure the cleaner has fully cooled down before removing the Floor Head.

ACCESSORIES

NOTE: Accessories can only be attached on the handheld steam cleaner.

IMPORTANT: Inspect the seal on the steam nozzle before each use, if the seal is missing or damaged, do not use the appliance, please contact the authorized Hoover service.

Attaching the hose and the nozzles to the handheld steam cleaner

1. Fit the Hose to Steam nozzle of handheld unit and rotate clockwise until hose is locked in position and secure.
2. Attach Conic Tool to the nozzle on the hose. Insert and rotate clockwise until Conic Tool is in locked position and secure.
3. Fit other small accessories to Conic Tool, Insert and rotate clockwise until it is locked in position and secure.

Window Squeegee and Utility Head [21]

The Window squeegee is to be installed on the Steam nozzle of handheld unit and is

used for cleaning windows, mirrors and other smooth glass surfaces. Fit Small Cloth on Window Squeegee on. Choose the steam intensity setting appropriate for the fabric you are steaming.

Conic Tool Use on heavily soiled areas such as showers, kitchens.

Round Brush Use on stubborn grease and grime.

Small Metal Brush For oven grills and racks.

Big Metal Brush For oven grills and racks.

IMPORTANT: ensure that the hose and accessories are securely fastened before using the handheld steam cleaner, if steam escapes from the joint that means the hose and accessories are not correctly fitted, allow the unit to cool then remove and re-fit the hose and accessories.

CLEANER MAINTENANCE

IMPORTANT: ALWAYS ENSURE THE CLEANER HAS FULLY COOLED DOWN BEFORE PERFORMING ANY MAINTENANCE TASKS.

Empty the Water Tank

1. Unplug the cleaner from the mains power and ensure the unit has cooled.
2. Release the clean water tank by sliding the water release button upwards and remove tank from cleaner main body. [5]
3. Pull the cap on the Water Tank to open. [6]
4. Empty any excess water from the tank. Replace the cap and return to the cleaner.

Removing and cleaning the Textile Pad

1. Unplug the cleaner from the mains power and ensure the unit has cooled.
2. If necessary remove the Carpet Glider, then peel the Textile Pad from the Floor Base.
3. Wash the Textile Pad in a washing machine with a mild detergent at Max temperature 40°C.

IMPORTANT: Do not use bleach or fabric softener when washing the Textile Pad.

TROUBLE SHOOTING

Should you have a problem with the product, complete this simple user checklist before calling your local Hoover service.

The steam cleaner will not switch on.

- Check the unit is plugged in.
- Check the power cord.

The steam cleaner is not producing steam.

- There may be no water in the clean water tank.
- You may not wait for enough time when switch on.

The Textile Pad won't pick up dirt.

- The cleaning pad may already be saturated with dirt and needs to be washed.

Refer to the Maintenance section.

CLEANING FAQs

When is Steam capsule 2in1 ready? In approximately 30 seconds.

Can I use Steam capsule 2in1 on all floor surfaces? On all hard floors like marble, ceramic, stone, linoleum, sealed hardwood floors and parquet.

Does Steam capsule 2in1 emit steam automatically? No, to produce steam you should press Steam Release trigger under the handle.

Can I put detergents or other chemicals inside the tank? No, you would damage the product.

What if in the city where I live the water is very hard? You can use filtered water or distilled or de-mineralized water, it's highly recommended.

How long will one tank of water last before needing to be refilled? Up to 25 minutes if you press continuously the trigger.

Is the mop washable? Yes, it can be washed by hand or in the washing machine with a mild detergent at Max temperature 40°C. Do not use bleach or fabric softener.

How often should I replace the mop? It depends on different factors above all how hard the floor is. The best way to understand when to change the mop is when the mop is still dirty after having washed it or if you notice that it doesn't perform like before.

IMPORTANT INFORMATION

Hoover spares and Consumables

Always replace parts with genuine Hoover spares. These are available from your local Hoover dealer or direct from Hoover. When ordering parts always quote your model number.

Quality

Hoover's factories have been independently assessed for quality. Our products are made using a quality system which meets the requirements of ISO 9001.

Your Guarantee

The guarantee conditions for this appliance are as defined by our representative in the country in which it is sold. Details regarding these conditions can be obtained from the

dealer from whom the appliance was purchased. The bill of sale or receipt must be produced when making any claim under the terms of this guarantee.

Subject to change without notice.